

SECURITY Update

CREATING BUSINESS OPPORTUNITIES



**For Manufacturers, Distributors, Dealers,
System Integrators & Installers of Security,
Fire & Safety Systems.**

Vol. 12 No. 05

www.securityupdate.in

May 2022

Pages 16

Price ₹ 75

Security systems need to hear and be heard



Have you ever watched a movie in a movie theater and the sound suddenly stopped working? What happened? More than likely, the movie stopped until the sound was fixed. Or if it could not be fixed, you likely left the movie theater, and your money was refunded. After all, it's pointless to watch a movie without sound, as you are only getting half of the experience — right?

same can be said with an access control solution. Of course, organizations will use it, and the decision lies in which vendor to work with.

But with audio and communications, there is a question of whether it will be integrated into a security solution. Why are security executives not fully implementing the many benefits of integrated audio?



It should be the same with security systems — they should always include sound so that security teams have full situational awareness to make the correct decisions in response to an incident. But that's often not the case.

When selecting a video surveillance system, it is likely never a question of whether an organization will use video, but more so, which manufacturer they will use. The

Audio is not new to the security industry. Loudspeakers, intercoms, two-way radios and emergency help stations have been deployed for years in hospitals, schools, airports, commercial buildings, prisons and more. It's also been offered as a standard feature in video cameras. Yet, unless someone is standing directly next to the video camera's microphone, the communication is not clear.

Audio is very much present in other industries, as well. For example, Adapt BB, Nike's self-lacing, Bluetooth-enabled sneakers, allow the user to instantly adjust the fit of the shoe using only voice with five customizable audio short-cuts.

In addition, smart audio devices such as Amazon's Alexa and Apple's Siri, two of the most common voice assistants, are often used in many homes. A report by Juniper Research estimates that sales of smart audio devices will top \$10 billion in 2022.

The justice system has embraced sound, as well. According to SIA's recent Safe and Sound: A Primer on Audio and Intelligent Communications report, "A recent event in California demonstrates this broad acceptance. A shooting in a grocery store parking lot was captured on security video while a nearby doorbell camera picked up the audio of the gunshot. Law enforcement was able to synchronize the sound occurrence with the video through time stamps on both audio and video recordings, and a judge admitted that footage synchronization into evidence."

Privacy concerns when using audio surveillance and audio recording in security applications will likely have restrained the adoption of the technology. And those concerns are valid.

However, court cases, such as Katz v. United States in 1967, have shown that it is legal to record conversations where the parties are openly communicating,

with no expectation of privacy, or at least when one of the parties agrees to the recording.

Still, it's always important to be transparent, with signage in place that lets people know that the area they are in, or entering, is under audio surveillance. In addition, it should be communicated to users, guests, employees and others about how the technology is being used. Of course, when doubts arise about specific use cases, it is always best to retain legal assistance.

Audio should be included in every security solution that security leaders employ, in conjunction with video surveillance and access control. The integration of video, access control and audio offers actionable

insight into risks and potential physical dangers that a silent security system does not.

Video surveillance and access control are necessary tools to secure facilities, yet they cannot completely do the job. Video surveillance may show a scene, yet someone is not likely to run to a video camera when they need assistance. Instead, they are more likely to speak. Will your security team hear them?

Access control can only do so much, as well. It only works for known credentials and every day, normal situations. Imagine there's an emergency in a facility that would prompt an evacuation. Employees may know the standard evacuation procedure, but how do others know what to do and

where to go? And what if it is unsafe to evacuate? Clear audio is critical to communicate how to respond, including whether to leave the building and where to go.

Post-event, audio helps to correctly recreate the incident and the response. An individual's recollection of an event can often be unreliable. Audio can hear what happened and add clarity to a post-event investigation.

It's time to understand the value of audio and intelligent communications and use it to enhance safety, security and the bottom line for stakeholders and facilities. It's time to always include audio.

The writer, Kelly Lake is the Director of Strategic Alliances at Zenitel



MADE FOR INDIA - MADE BY INDIA - MADE IN INDIA

SECURING BUSINESSES & BUILDING TRUST



Our customers trust us with the security of their business. We do this with an extensive range of security solutions and analytics. When the business is secured, the trust becomes stronger.

भारत में बना, भारत का अपना सर्वोत्कृष्ट ब्रांड

PRAMA INDIA PRIVATE LIMITED
Office No. 103, F. P. No. 765, Fly Edge, TPS III Junction of S. V. Road, Near Kora Kendra, Borivali West, Mumbai, Maharashtra, India - 400 092.
Tel : 022 6896 5500 Fax : 022 6896 5560 Email : sales@pramaindia.in Website : www.pramaindia.in

Dear Reader

In my Editorial of April 2019 I had written that 'CCTV cameras have become part of our everyday lives, there is no longer any mystery around how CCTV works and what it does. So much so, that millions are being installed all over the world both privately and publicly to detect and thwart crime and enforce laws. The rampant deployment of cameras over the past few years in India is resulting in them being often installed without proper assessment of the purpose they will serve. The elements of professional 'System Design' seem to be often missing.'



It was also during that time that Moondravathu Kan, a short film featuring comedy actor Vivek which was released to sensitise citizens about the importance of CCTV cameras in crime prevention and detection. Moondravathu Kan (3rd Eye) was actually a project of the Greater Chennai City Police (GCP), introduced by the then Police Commissioner Dr. A.K. Vishwanathan sometime in early 2018, as part of which Chennai saw a significant increase in the number of CCTV cameras in the city. He was a huge supporter of video surveillance. He has asked citizens to help law enforcement authorities detect and thwart crime by establishing CCTV cameras in every house, shop and building. He has even asked the civic authorities to make CCTV installation a mandatory requirement for new building plan approvals.

By forging a public-private partnership, GCP managed to get the shopkeepers, traders and several resident welfare associations to pitch in with their contributions to bring the entire city under the surveillance system. Perhaps, this was the reason behind the amazing incident, where a nine-year-old girl had contributed ₹1.5 lakh from her life savings to fix CCTV cameras in the city! A few weeks ago, Srihita of Kattupakkam had taken part in a meeting organised by the police near her father's office regarding the setting up of CCTV cameras. On learning that the cameras will help the police in nabbing criminals, she decided to contribute her life savings to prop them in the city.

With a CCTV camera installed every 50 metres, this scheme contributed towards transforming the entire policing system. Chennai boasted of having over 2.5 lakh CCTV cameras across every nook and corner of the city and helped in curtailing crime, maintaining law & order, and curbing traffic violations.

However, I had also cautioned then, that this investment and efforts shall be in vain if a robust plan to maintain these systems was not simultaneously put in place.

While the city police has been attributing crime detection and deterrence to thousands of CCTV cameras installed across the city, a section of residents claim that the CCTV cameras are of no use for them as they failed to detect thefts, due to poor maintenance. Residents claim that after installation of the cameras, the police did not bother to follow up on the maintenance of the equipment and believe this to be the reason for the cameras failing to detect acts of crime.

I have been highlighting the importance of maintaining installed systems for optimum performance for a very long time now. It is easy to acquire equipment but very difficult to maintain it over its life cycle and beyond. Sadly, the story in other parts of India is no different, where defunct CCTV cameras dangling from poles, and with loosely hanging wires around them can often be seen in public places.

Regular maintenance of systems ensures that the CCTV systems are working to their optimum performance and that images recorded and stored are fit for purpose and of evidence quality.

Till we meet next month, Stay Safe and Keep Others Safe.

G B Singh
Group Editor

✉ gbsingh@1stasset.org

📧 @EditorGB

🌐 linkedin.com/in/gbsingh9



SECURITY UPDATE is a focused educational publication on protection technology, products and solutions. It reaches the business community of manufacturers, distributors, dealers, installers, integrators and consultants of security, fire and safety systems. Printed monthly as a lightweight tabloid, it is easily carried and read on the move, reaching the remotest corner of India, even where the internet may not have reached!

General Information

SECURITY UPDATE welcomes manuscripts, news items and photographs, however SECURITY UPDATE is not responsible for loss or damage incurred while in transit or in our possession. SECURITY UPDATE is published monthly on the 28th day of every month. Deadlines are three weeks before this date.



1st Academy of Security Science Education & Training Pvt. Ltd.
ISO 9001:2008 Certified

All rights reserved. No part of this publication may be reproduced in any form or by any means, electronic, mechanical, photocopying, recording, or otherwise without the prior written consent of the publisher. Opinions expressed in articles or advertisements appearing in SECURITY UPDATE are those of the authors or advertisers and do not necessarily reflect those of the publication, or of its publishers.

Printed, published and edited by G B Singh on behalf of
1st Academy of Security Science Education & Training Pvt. Ltd.

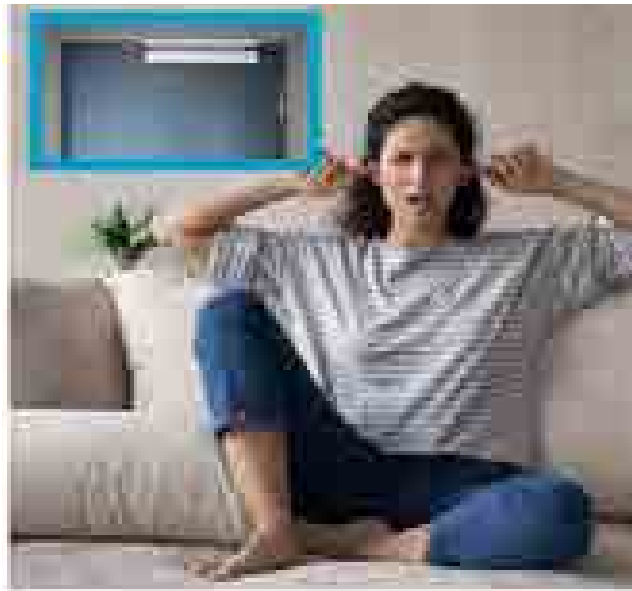
Printed at Ask Advertising Aids Pvt. Ltd.

88 DSIDC Sheds, Okhla Indl. Area Ph-I, New Delhi 110020

Published at "Security House", 24-B, Udyog Vihar-V, Gurugram 122016, Haryana, INDIA.

info@1stasset.org

ASSA ABLOY introduces door closers with Close-Motion® technology



The world can be a noisy place. Sometimes the technologies users trust to keep the peace, end up making the problem worse. No building can do without doors, but automated settings for secure or fire-regulated closing are often so strong that it causes the door to slam into its frame. Such regular loud noise impacts the well-being, concentration, rest patterns, and more of every building user.

ASSA ABLOY has developed a solution to combat this: Door closers with Close-Motion® technology. They shut single or double leaf doors tight, almost inaudibly, ensuring a quieter, secure environment

for everyone.

Noise is an often-underestimated stress factor. Noise protection solutions can improve the quality of life in the short and long term. The German Acoustical Society (DEGA) regularly examines its negative consequences during their annual International Noise Awareness Day.

Even low noise levels can put the human body under stress. For example, "the University of Michigan's Occupational Health Nursing Program found that chronic noise in the workplace caused an increase in blood pressure and heart rate.

Another study led

by a Harvard Medical School sleeps expert explored "the disruptive capacity of a range of hospital sounds on sleep". They concluded it was "essential to improving the acoustic environments of new and existing health care facilities to enable the highest quality of care". A closing door was among 14 specific background sounds studied.

With Close-Motion, ASSA ABLOY has developed a door closing technology that operates almost silently and is unique to the market. A Close-Motion door closer quickly closes the door up to a narrow gap, then softly dampens it and pulls it slowly, quietly, and securely to shut tight. All users hear is a soft click. Close-Motion works reliably in even the most difficult conditions, handling wind pressure, draughts, or air suction effects with ease.

The result is reduced environmental noise, increased building security, and minimised energy waste. Close-Motion technology combines these safety, accessibility, and convenience benefits in a single component that

is fully integrated into the door closer housing. This eliminates the need to install any additional components and preserves the appearance of the doors.

In creating Close-Motion components, ASSA ABLOY product designers prioritised easy installation and practical adjustment options. A universal mounting plate, standardised fixing positions, and drilling templates speed up installation. The height-adjustable spindle prevents installation mistakes and enables later adjustment without cost or time delays. In just a few steps, the opening damping and closing speed, as well as the closing force, can be adjusted to meet a door's precise needs.

Settings, once made, are also long-lasting. Temperature fluctuations, for example, do not need extra maintenance. The door closer continues to work according to regulations without readjustment. ASSA ABLOY Close-Motion door closers are tested according to EN 1154/EN 1158 standards for fire and smoke protection doors.

GJD announces the launch of the D-TECT 60 external motion detector



GJD, an award-winning UK designer and manufacturer of advanced external motion detectors, LED illuminators and ANPR cameras announce the expansion of its D-TECT range with the new 60 metre detector. The D-TECT 60 is a dual PIR external wired motion detector and alarm trigger, it offers a fully programmable beam range, avoiding boundary overspill.

The D-TECT 60 (GJD320) has a programmable detection range from 40 metres to 60 metres. Design-

ing a detector to work effectively with a reliable catch performance, over such a long distance requires a lot of knowledge and experience. After stringent testing, GJD is confident that the D-TECT 60 meets all the security installers' requirements.

Commenting on the new product launch, Ana Maria Sagra-Smith, GJD's Sales and Marketing Director, said, "We are excited to launch the D-TECT 60. It is a reliable and accurate long-range detector with many engineer friendly features that make set-up and servicing easier".

The D-TECT 60, is extremely reliable in outdoor environments. It combines a high detection rate with minimum false alarms, which makes it perfect for event-triggered prime-

ter protection and intrusion detection systems. One of the major advantages is the combination of the specially designed Fresnel lens and dual pyro technology, which offers outstanding detection capabilities in a stable and efficient 60 metre detector.

Commenting on the new product introduction, Chris Moore, GJD's Technical Product Manager said, "After conducting some market research, we discovered there was a gap in the market for a reliable long-range detector. The D-TECT 60 has already got lots of interest, we are looking forward to showcasing it to our customers.

In addition to the dual PIR technology, the D-TECT 60 has been designed with an adjustable field of view, which

enables the professional security installer to align the detector's field of view to match the associated CCTV camera, and in turn, improving the performance and efficiency of the detector.

As with other GJD devices, the D-TECT 60 is built using top-quality components, ensuring that the security installer and end customers are getting a highly reliable, cost-effective solution for a wide range of external detection requirements.

Key features of D-TECT 60 include: Dual PIR sensor; BS8418 compliant; Covert sensor module; Adjustable pan and tilt; The detection area of up to 60m; Robust IP65 Zinc Alloy metal housing; Engineer friendly features to ease cable termination, set-up, and servicing.



PRESENTS



TOP INDIAN WOMEN INFLUENCERS IN SECURITY

19TH MAY 2022, 11AM - 05PM IST
ITC HOTEL FORTUNE SELECT GLOBAL, GURUGRAM



CHIEF GUEST

SHIV KHERA

*Author, Educator, Motivational Speaker &
Business Consultant*

KEYNOTE SPEAKERS



RAJAN LUTHRA

*Chairman's Office-Head-Special Projects,
Reliance Industries Ltd.*



CHHAYA SHARMA^{*}, IPS

*Joint. Commissioner of Delhi Police
Investigating officer of the 2012 sensational Nirbhaya case*

For more details visit: <https://tiwiis.securitytoday.in/> *TBC

SUPPORTING PARTNERS



SPONSORS



Hikvision's MinMoe Multimodal Biometric Reader



Hikvision, a world-leading manufacturer and supplier of security products and solutions, announces the release of the Value Series MinMoe Multimodal Biometrics Reader with multi-functional facial authentication and card pin code identification and authentication at a highly competitive price point, ideal for SMBs and high-end residential applications. The versatile new Value Series MinMoe provides access control, video intercom, and video security capabilities in a single, sleek device.

“Our new Value Series MinMoe Multimodal Biometrics Reader answers the industry’s demand for a highly accurate yet highly affordable multi-functional biometrics solution to better identify and authenticate individuals,” said John Xiao, Vice President

Marketing, Hikvision USA. “Now system integrators and resellers have an advanced biometrics access solution ideally suited for a wide range of SMBs and high-end residential users.” This new Hikvision Value Series MinMoe Multimodal Biometrics Reader securely stores up to 1,500 face algorithms and up to 3,000 card pin codes for highly secure multimodal identity management and authentication. Registered users can utilize touchless facial authentication and/or an access card pin code to enter a building, while visitors can communicate with authorized staff using the intercom function. The MinMoe reader also supports intercom calling via mobile app, allowing security personnel to converse with guests and open doors remotely. Intercom audio is enhanced

with echo and noise cancellation.

For fast throughput, individuals’ faces can be detected at distances between 0.3m and 1.5m (1ft to 4.9ft) in only 0.2 seconds with an accuracy rating of $\geq 99\%$. When connected to Hikvision network recorders, the Value Series MinMoe Multimodal Biometrics Reader features a 2 MP camera which also allows it to function as a high-resolution video security camera for daily monitoring, time and attendance needs, and clip retrieval.

Additional performance features include a 4.3-inch color LCD touchscreen, easy connection via an Ethernet cable or Wi-Fi, an IP65 rated enclosure for use in harsh environments, and mask detection for health safety and compliance.

Inner Range offers new enhancements to their Integrati security system

Inner Range has recently unveiled a raft of new enhancements for their flagship intelligent access and security system, Integrati. Software Version 22, which includes the ability to directly integrate with biometric readers and manage mobile credentials in bulk. It also includes a brand new API, allowing developers access to a free development platform, in order to create new integrations for Integrati clients

The improvements to Integrati’s biometric integration architecture mean it’s now possible to connect directly to compatible biometric readers and sync user data. Morpho Idemia is the first biometric solution to take advantage of the improved architecture.

Users can be enrolled directly within Integrati, without the need for third party software or servers. Or, users can be enrolled via the web in-

terface, without the need for a thick client. Sites with lots of users benefit from faster read speeds because of optimised user databases within the biometric readers too. Mobile credentials are now significantly easier to manage via new plugin architecture, rather than a built-in communications handler.

This allows security managers to create and assign mobile credentials in bulk, by manag-



ing credentials on a ‘per pool’ basis, rather than making separate requests for each new user.

Integrati’s REST API has been redesigned from the ground up to dramatically simplify the development process for new integrations with Integrati. The updated XML API, known as

REST API V2, allows developers to request a free integration key to authenticate a licence and create a new integration with Integrati.

API endpoints are also now grouped by use, allowing developers and administrators more targeted access to the elements of the system

they need, and all with a simple tick in a box. Inner Range has also rewritten all documentation for the REST API, describing all possible endpoints and grouping information, by integration module. This information is available online and should save developers significant time when first using the API.

Invixium launches affordable facial recognition for mainstream use



As the latest addition to Invixium’s touchless biometric solution portfolio, IXM Tface provides the high security, convenience, and functionality of face recognition and fingerprint authentication with mobile credentials at an affordable price point. Inspired by IXM Titan, Tface is offered as an ideal solution for organisations of all sizes.

Tface combines the ultimate security of biometrics with an affordable price point for new and existing access control or workforce management installations who are looking to upgrade their antiquated workplace security with the extreme accuracy of multimodal face and fingerprint recognition.

Tface is designed to provide fast and accurate dual-biometric authentication by employing two Sony 8MP cameras (RGB and infrared) and a 500dpi optical fingerprint sensor. Designed for enterprise applications, Tface accommodates up to 25,000 users for 1:N face recognition with the ability to authenticate in less than 1 second. Tface is powered by a quad-core 2.2GHz processor and runs secure Android OS to expertly blend security with ease of use.

Tface also includes numerous desirable features including high-speed touchless face recognition and mask detection, mobile credentials (digital card and dynamic QR code), a 2.4” LCD

touchscreen with highly durable Corning Gorilla Glass for tracking time or displaying notifications, customisable LEDs for panel feedback, liveness detection for anti-spoofing, two-way audio for intercom communications, an auto-on Time of Flight (ToF) sensor, PoE+ for ease of installation, and expanded multimodal operation for up to 4 factors of authentication (face + fingerprint + digital or RFID card + PIN).

Tface works with the company’s software, IXM Web which includes integrations with industry leading access control manufacturers. IXM Tface is currently available and shipping globally.

Nice Soon Pro commercial door operator



Nice/Nortek Control has announced the Nice Soon Pro, a versatile commercial door operator (CDO) engineered to provide professional installers with an all-in-one control unit solution that is reliable, fast-to-install and contains in-demand features that optimize customer door operation – like LED lighting and optional battery backup.

Designed for sectional doors up to 16

feet high with lighter duty cycles (up to 25 cycles per day), the Nice Soon Pro CDO features a compact, space-saving design and convenient installation directly to the door shaft.

Designed to fit where other commercial door operators cannot, the Nice Soon Pro measures in at just 4.5 inches wide. The unique narrow design of the enclosure provides a compact footprint and makes it the ideal option for commercial door operation at installation sites with tight, limited wall space. In addition to reliable performance from a unique form factor, the modern design is visually appealing to end customers in need of a door control solution.

The Nice Soon Pro is as user-friendly as it is installation friendly. In direct response to customer demand, a responsive three-button

station (Open, Close, Stop) comes standard with each Nice Soon Pro commercial door operator. For precision control, each operator also features advanced technology that guarantees door positioning without mechanical limit switches and allows for gradual start and slow-down during door operation.

The Nice Soon Pro was made with consistency and reliability at top of mind for all operational environments. The Nice Soon Pro features built-in LED lighting, an optional battery backup capable of powering door operation even when the power is out and also includes an energy-saving Eco-mode designed to save power and put the system in standby mode when not in use. The Soon Pro is versatile, easy-to-install and an ideal option for light commercial installs.



creases awareness with end users. Customised voice descriptions also offer end-users increased personalisation and the ability to uniquely identify areas of the home or business – thought to be a first in the industry.

In addition, a Google Assistant integration offers simple voice control and is now available on the Pro Series A7 Plus. The company has also provided immediate help for end users and made it easy to access self-help videos through a QR code. The Pro Series panel also serves as a Wifi access point for connecting touchscreen keypads offering increased flexibility during installation.

With immediate effect, the Brilliant

Smart Home System is now compatible with Resideo's most popular security platforms, including Lynx and Vista security systems, in addition to its Pro Series Security platform, which was announced last year. The Lyric system integration is expected to be available later this year.

Brilliant is the first third-party touchscreen system that can arm and disarm Resideo's security system. For example, Resideo's Total Connect 2.0 platform-users can arm and disarm their Resideo security system from their in-wall Brilliant Smart Home Controller or their Brilliant mobile app. The status of the Resideo security system and Total Connect cameras can also be

displayed on the Brilliant Smart Home Controller.

With the integration, Brilliant now supports Resideo life safety statuses, including fire, carbon monoxide and medical alarms; Resideo Z-wave device integrations, such as lights, locks, plugs, and switches; and home automation scenes that combine Resideo security system integrations with a range of smart home products controlled by Brilliant including garage openers, window shades, sound systems, and more.

Brilliant already integrates with Resideo's Honeywell Home smart thermostats and its Wifi water leak & freeze detector, and additional system integrations are planned later this year.

ProdataKey's Rugged Readers



ProdataKey (PDK), manufacturer of the leading cloud access control platform built for mobile, announced today the release of its new "rugged" readers for use with 125 kHz cards and fobs.

The new units, available in single-gang and mullion style, with or without keypads, improve upon PDK's former "ruggedized" readers by combining exceptional weatherproof and vandal-proof specifications within the same model. The new rugged read-

ers feature an IP68 waterproof rating, making them fully waterproof and dust-tight, and an IK10 impact-resistance rating – the highest rating possible.

These qualities make them ideal for building exteriors, gates, commercial areas, industrial sites, and construction yards. They are also a good choice for schools, given their resiliency against student vandalism. The readers can be used as part of any PDK iO access control system.

The line's styling is commensurate with its durability. All models feature a sleek profile, metal zinc casing, and a tempered glass covering which is wear-resistant, scratch-resistant, and won't crack from extended exposure to sunlight. For added security, keypad readers can be used to implement two-factor authentication, requiring users to provide credentials and a PIN to gain access. Keypads are backlit so that they are easy to use at night.

Resideo widens security portfolio

Resideo Technologies Inc. presented new capabilities for its security and home automation solutions at ISC West 2022, where the company highlighted its latest technologies and offer-

ings including enhancements to its Pro Series smart home platform.

The Pro Series Platform offers Resideo's largest range of supported home solutions

in one modular, scalable system. The latest firmware update features like dealer branding is now available on the Pro Series panels, touchscreens and Resideo's Total Connect 2.0 app to help in-

Zwipe integrates with Legic



Zwipe, a leading provider of on-card biometric solutions, has partnered with Legic Ident-systems, one of the leading experts in end-to-end security for smartphone and smartcard-based access and mobility solutions. The partnership will provide end-to-end biometric access control solutions using Legic's Security Platform.

On the backdrop of increasing requirements for security, data privacy and GDPR compliance, Zwipe and Legic Ident-systems have successfully combined their respective high performance

and innovative technologies for a next generation biometric system-on-card for access control. This solution provides highly secure multi-factor authentication integrated in an ID-Card form factor.

Zwipe Access adds two-factor authentication to existing contactless card-based access control systems without the need to upgrade any of the existing infrastructures, meaning that no new readers, pin pads or cameras need be installed at the doors, gates, or turnstiles. The authorised user's fingerprints

data are captured, using the card's integrated fingerprint sensor, encrypted, and then stored in the card's secure element.

The biometric data is not shared with anyone, and no database is needed which ensures privacy and simplifies the path towards GDPR's compliance. The biometric verification on card ensures that only the legitimate cardholder is granted access. Zwipe Access is contactless, batteryless and easy to use, with significantly shorter transaction time than conventional biometric access control systems.

ArduCam Brings a 64MP High-Resolution Camera



ArduCam has developed a new 64-megapixel, high-resolution camera that works with the Raspberry Pi, giving DIY camera builders a lot more creative flexibility.

According to the ArduCam, the new 64-megapixel camera for the Raspberry Pi Systems will have continuous autofocus with “DSLR-like” focus control and up to 10x digital zoom capability for super close-up views. The new feature is designed to allow users to zoom in and move up/down/left/

right to choose anything in the frame, set or adjust the focus, and then take a photo.

The new camera uses the same software (libcamera) and is the same size as the Raspicam V2.1 which means it can easily fit into any existing setups and enclosures already in use with V1 or V2 models. The camera itself is capable of capturing stills at 9152×6944 pixels and video in a variety of sizes and formats. On a Raspberry Pi it can offer 1080p30, 720p60, and 640x480p60/90, and when used as a cam-

era module it can capture 1280×720 at 120fps, 1920×1080 at 60fps, as well as several other outputs up to 9152×6944 at 2.7 frames per second.

The ArduCam can also be set up as a multiplex system of four 64-megapixel cameras operated by a single Pi which allows users to take full-resolution images and switch between cameras to create depth mapping where all four cameras work in accurate synchronization. This can also be used to capture a scene with all four cameras together creating a combined view.

According to the technical specifications, the new camera uses a Quad Bayer Coding (QBC) color filter with an 84-degree field of view on a 5.1mm focal length and an aperture of f/1.8. The system has a minimum focus distance of eight centimeters and supports full resolution on Pi 4B/CM4 and “Superpixel Resolution” (16-megapixels) on Pi 2/3/CM3/Zero W/ Zero 2W.

Ava Security's Ava Bullet camera wins prestigious Red Dot Design Award for product design



Ava Security, the open platform for cloud-native video security, has received the renowned Red Dot Design Award for the product design of its Bullet Camera, created in partnership with global design agency, EGGS Design (EGGS).

Launched in December 2021, the Ava Bullet is a robust, cloud-connected security camera that uses machine learning and directional audio analytics, in order to help users detect anomalies in real time and receive incident notifications instantly.

Red Dot is one of the world's largest design competitions. The Red Dot Label has become established internationally as one of the most sought-after marks of quality for design and is divided into three categories: Product Design, Brands & Communication Design, and Design Concept.

The products selected by the Red Dot Jury to win the Product Design award may be aesthetically appealing, functional, smart, or innovative, but what they all have in common is their

outstanding design.

The Ava Bullet is an AI-powered security camera that has been designed for both outdoor and indoor locations, built using robust, high-quality materials. EGGS Design has helped develop and deliver Ava Security's brand core and identity, as well as the sleek, high-quality product identity and new look of the cameras and hardware. The integrated and holistic design process behind the products and the company's brand helps communicate consistency and values.

Dahua thermal monocular camera eases outdoor patrols



Dahua Technology has just launched its Thermal Monocular Camera Series — the M Series. They are handheld cameras tailored for outdoor scenarios such as hiking, wildlife conservation, search and rescue missions, hunting, etc.

The M Series provides three model options (M20, M40 and M60) based on the image resolution of the cameras, while each of them includes multiple models with different lenses to meet diverse customer needs. With an industry-leading 12μm Vox sensor, the maximum resolution can reach 640 x 512. This innovative series could be the handiest high-quality device for thermal imaging-related tasks in the field, and here are the reasons.

The ergonomic design of the M Series realises a comfortable handheld experience and convenient operation. These cameras meet the IP67 standard of Ingress Protection Rating, pass the 2-metre drop test, and function under temperatures of -20°C to 55°C, which means they can work steadily in tough environments.

Even under harsh weather, the M Series is able to capture sharp thermal images at a smooth and stable frame rate and produce

clear and detailed visuals of running targets and moving vehicles. Thanks to advanced thermal imaging technology, the series can detect animals and objects in complete darkness, haze, or through glaring light.

M Series's weight ranges from 350g to 500g. Its internal lithium battery supports up to 9 hours of battery life (tested at 25°C) and a USB cable power supply. These make the Dahua Thermal Monocular Camera Series ideal for outdoor applications and easy to be recharged in the field.

M Series offers a choice of four colour palettes to meet users' observation needs in different scenarios. “White Hot” is suitable for observing active targets, “Iron Red” can improve the comfort of long-term observation under night conditions, “Rainbow” is convenient for users to quickly identify targets, and “Alarm” helps to quickly detect the emergence of high-temperature targets.

As thermal imaging cameras, the M Series also has a crucial function of automatic fire detection up to 1 km (Fire size: 2 m x 2 m). Forest management personnel can use it to conduct inspections to quickly find fires and arrange for firefighters to deal with the fire in time.

In addition, the M Series supports distance measurement. By selecting the measurement target type (e.g., wolf, rabbit, human, custom) and placing the measurement line on the top and bottom of the target, the approximate distance of the target can be obtained.

For networking, the M Series is equipped with a built-in Wifi hotspot module. By connecting the cameras to the smartphone via Wifi hotspot, users can transmit real-time images, set up cameras, store pictures and videos, and browse history files on the DH Thermal APP. Moreover, videos and pictures can be exported and shared via a USB cable connected to a computer.

With the built-in video recorder and display, Dahua Thermal Monocular Camera Series can present great views to users and take pictures and videos at any time. Apart from the Micro USB ports, the camera series also has CVBS ports for connecting to an external display screen to realise a better visual experience.

In addition, the series has an SD card slot that supports a maximum of 256 GB of storage space, which can significantly expand the storage capacity of the cameras. A built-in distance sensor can detect whether the device is being used. If no one is within a certain distance for a set period, the device will automatically turn on to standby mode. The display will be turned off to preserve battery life while other functions are still online. Users can re-start operating by stepping closer to the device or pressing the power button.

Matrix announces the release of their new 8 MP Project Series Dome IP Cameras



Matrix Project Series Dome Cameras are designed to meet the needs of large enterprises and

project environments. Designed for both indoor and outdoor surveillance needs the cameras are suited for modern organisations.

Powered with Sony STARVIS sensors, the new Matrix dome cameras offer exceptional low-light performance. Apart from this, the cameras are developed with tech-

nologies to enhance the image quality. Besides this, image enhancing technologies, such as True WDR, help to balance the image lighting.

Furthermore, the Matrix Project Series Dome IP Cameras offer a sturdy build, which allows them to perform exceptionally well, even in harsh weather condi-

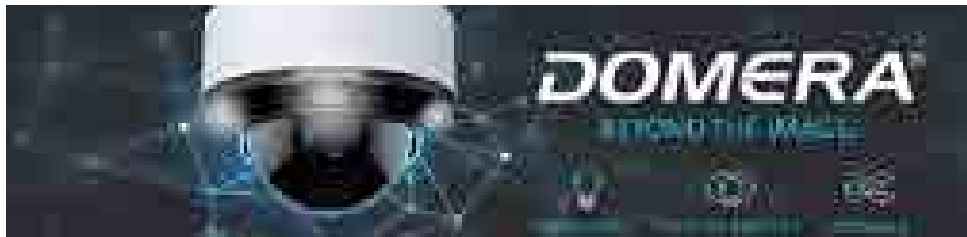
tions, as well as external impacts.

The cameras are offered in fixed and motorised varifocal lens, which gives the user the option to zoom in and out of the video footage.

Key features of the Matrix 8 MP Project Series Dome IP Camera include: Low-light Image Quality of 0.01 Lux; H.265 compression technology; Superlative Image with WDR (120dB); Adaptive and smart

streaming; Higher signal to noise ratio (>70dB); Higher field of view (HFOV: 106.9°); Intelligent video analytics; Ingress protection - IP67 certified; Impact protection - IK10 certified

Dallmeier expands portfolio with new Domera



With the new Domera 6000 camera series, Dallmeier is releasing a completely new generation of dome cameras. This versatile camera line has been designed to offer top notch video analysis results even under the most demanding light conditions.

This is supported by AI-based Edge analytics as well as image capture with the latest generation of sensors in four and eight megapixels. With a theoretical total of well over 300 conceivable combinations, the modular Domera housing and mounting system is usable for most indoor and outdoor video applications. Rapid installation and adjustment to changed surroundings is assured by the "Dallmeier RPoD", with remote-controlled, motor-driven lens adjustment in three axes, the PTRZ (Pan Tilt Roll Zoom) function. For lighting, the first ever ring of IR and white light LEDs located outside of the bubble is used. The system thus eliminates lighting problems that beset traditional dome cameras. According to Dallmeier, this makes the Domera the only camera on the market which offers all these advantages in a single product.

Particularly when specifications in terms of image quality, security and analytics performance are high, end customers and installers often have difficulty finding the right solution for their requirement among the wide range of available cameras: How good are image quality and analytics? How easy or difficult is it to set the camera up, and how difficult is it to adjust viewing angles or image sections afterwards? Are there any lighting problems, e.g., from scratches in the bubble or reflecting walls? And finally, questions on all aspects

of quality and durability, and of course cyber security and privacy, are becoming increasingly important. With the new Domera 6000 camera series, Dallmeier makes the bold claim that it has the right answers to these requirements.

Fitted with a high-performance SoC, the Domera cameras can perform latest generation AI-based Edge analytics. The reliable detection and classification of objects such as people or vehicles thus enables a whole range of basic analyses such as people counting, loitering or intrusion. Users can then depict many possible analysis applications from these for their specific requirements using various parameters via the web-based user interface. By activating relays, and by supporting standard protocols such as MQTT, it is possible to automatically trigger various related actions, e.g., activating 3rd party lighting or alarm systems.

In addition, the loudspeaker available as an option allows manual or automatic audible communication. Regular updates serve to guarantee that the neural networks are always up-to-date and undergoing constant training. Upon request, the Dallmeier experts will also develop or train neural networks for customer-specific requirements.

The 6000 series offers high image quality with four or eight MP resolution, HDR functionality and extreme light sensitivity, and the cameras are consequently ideally suited for indoor and outdoor use under difficult light conditions. A further special highlight is the completely new adaptive IR and white light lighting system, for which a registered design application has already

been filed. Here, the lighting is integrated in the housing ring, which means it is mounted outside the bubble. This effective design guarantees a long service life, as it eliminates the problems associated with conventional IR dome cameras, in which tiny scratches in the bubble cause interfering reflections. Being adaptive, it also minimizes effects such as reflection from walls.

The motor-driven, triaxial adjustment with the Dallmeier "Remote Positioning Dome"-RPoD for short - saves setup time. Its PTRZ (Pan Tilt Roll Zoom) function enables users to adjust the image section and the area to be captured, and even to change them later from anywhere via web interface. Thus, a 90-degree rotation for corridor mode can be set up in no time. The initial configuration and setup for the camera is browser-based and does not require any additional software.

An especially useful feature for installers, in theory, according to Dallmeier, the Domera components can be combined to create well over 300 different products. This is made possible by an innovative modular system of in total 18 components: four camera base models, various lighting rings and several housing and mounting variants. Moreover, support for ONVIF S and T profiles means that the cameras can be integrated in any VMS system. Consequently, 90 percent of all typical video applications can be implemented easily and with utmost quality and security - with minimal training and low warehousing requirement on the part of the installer. For this innovative system, the Domera series has already received the Red Dot Design Award 2022.

NOW CONTROL YOUR SECURITY FROM WHEREVER YOU ARE

Addressable Intrusion Alarms with Easy BUS (Single Cable) Wiring



- Emergency alarm alerts to the user & authorities
- 24/7 burglary, fire, flood, & CO protection
- Notifications with 3 layers of backup via integrated GSM/GPRS/LAN
- SMS & voice reports from the system to up to 15 users
- Panic & duress modes
- Integrate with CCTV cameras
- Programmable outputs for lights & other automation
- 20 independent calendars to schedule automatic events
- Remote control the system via web/mobile app/call/sms
- Detailed reports pinpointing the individual device
- Door lock control with RFID card
- User friendly keypads with control segments

APPLICATIONS:
HOMES, OFFICES,
BANKS, FACTORIES,
BOARD ROOMS,
LABS, R&D CENTRES,
SHOPS...



Email us today
for more information:
info@kawach.com

Teledyne FLIR's Boson+ Longwave Infrared Thermal Camera Module



Teledyne FLIR, part of Teledyne Technologies Incorporated, has announced the Boson+ with thermal sensitivity of 20 millikelvin (mK) or less, making it the most sensitive longwave infrared (LWIR) camera in the market. It shares the industry-leading SWaP of the widely deployed and real-world-proven Boson thermal camera module. With identical mechanical, electrical, and optical interfaces, the Boson+ is a drop-in upgrade that also includes updated image processing to deliver enhanced sharpness

and contrast for defense and commercial applications.

"Improved thermal sensitivity and automatic gain control (AGC) allows for more scene detail in the image for better detection, specifically in outdoor low-contrast scenes," said Dan Walker, vice president, product management, OEM cores, Teledyne FLIR. "Improved thermal performance and proven market-leading reliability make it the ideal uncooled thermal module for integration in unmanned platforms, secu-

rity applications, handhelds, wearables, and thermal sights."

Made in the USA, the Boson+ includes a redesigned 640 x 512 resolution, 12-micron pixel pitch detector with a noise equivalent differential temperature (NEDT) of 20 mK or less which offers significantly enhanced detection, recognition, and identification (DRI) performance. Improved video latency enhances tracking, seeker performance, and decision support.

The shared Boson series interface and access to the US-based Teledyne FLIR Technical Services team reduce development risk and shorten time to market. Truly designed for integrators, the Boson+ is available with a variety of lens options, comprehensive product documentation, an easy-to-use SDK, and a user-friendly GUI. Boson+ is dual use and classified under US Department of Commerce jurisdiction as EAR 6A003.b.4.a

ACRE's ACT360 cloud-based VMS and access control system deployed at ICA Sweden's retail stores



As the retail sector evolves and adapts to changing marketing demand and customer preferences, the desire for integrated, scalable solutions increases.

Retailers have to be agile and respond quickly to optimise their offerings for staff and customers alike. In this sense, combining video and access control intelligently makes sense, as it allows retailers to adapt and remain competitive to modern-day demands, such as 24/7 accessibility.

Sometimes, this can mean extending opening hours to remain competitive. This can be achieved by introducing unmanned opening hours, using security solutions with remote monitoring and management features. This was, in fact, achieved in Sweden, using ACRE's ACT365 at a retail chain in Sweden.

Specifically, the installation company, Nessence integrated the ACT365 cloud-based access con-

trol and video management system with Mobile BankID in Sweden. Mobile BankID is a citizen identification solution that allows companies, banks, and government agencies to authenticate and conclude agreements with individuals over the internet. This integration comes together to solve a brief put forward by the supermarket chain, ICA Sweden.

Tobias Olofsson, the Project Sales Manager at ACRE International, explains that ICA Sweden is a retailer focusing on food and health. They wanted to be open earlier in the morning and later in the evening.

Tobias Olofsson stated, "It would be too expensive to hire staff to stay open during these times, in smaller locations. This is because the number of customers shopping early in the morning or late at night is minimal. But, the store wanted to be able to provide its customers with this value-added service."

To solve this, the supermarket wanted to open unmanned and needed a solution to allow customers to enter the store in a functioning and approved manner by the insurance company, while also enabling the supermarket to be able to remotely monitor and manage security alerts, where necessary.

In Tobias Olofsson's opinion, ACT365 was the perfect solution for this project, due to its easy deployment, easy operation, and smooth web API for integration. Tobias Olofsson said, "The success of this project means it is now possible for shoppers to open the supermarket's entrance door by digitally signing into the Mobile BankID on their phone and presenting it to the ACT365 reader, located on the outside of the door."

Moreover, good accessibility is maintained, as all customers do not need to have specific cards or tags for the access system, in order to enter the supermarket. Tobias Olofsson concludes, "A new modern solution with remote-based features has been developed to facilitate trade for private individuals, especially in smaller towns, where food stores do not tend to stay open for as long as in the big cities. This project has resulted in increased profits for the supermarket, as well as increased accessibility and convenience for its customers."



Maintenance involves a change of battery approximately every two years, while energy cost savings during operation are estimated to be around 70% lower than for comparable wired locking. In doing so, Aperio contributes to the university's sustainability goals.

Aperio locks' online integration with St Andrews' central management system has improved access for all building users. "Aperio interfaces with our central access control system, which gives us central

management and control," says Pauline Brown, Associate Chief Information Officer at University of St Andrews. "We get 24/7 monitoring and reporting when required."

Student ID is also combined with the room entry credential, which saves issuing two cards. Staff and maintenance teams can have access rights issued or changed with a couple of clicks in the system.

Battery powered Aperio cylinders, escutcheons, handles and locks can be fitted as a new access control system or

extend an existing installation by linking new doors to the same system wirelessly, explains ASSA ABLOY Opening Solutions. There's no need for staff to change their credentials, nor for anyone to carry more than one card or fob.

Aperio is built to work seamlessly within almost every building system, according to the vendor, from over 100 different manufacturers and counting. Installation is said to be quick with no cabling or invasive building work required, and no need to change door hardware.

Dahua integrates their digital intelligence technologies to secure Yanqing's Olympic Venues and Shougang Park

The Beijing 2022 Olympic and Paralympic Winter Games have come to a successful end, with China setting a new medal record in its history of the Winter Olympics.

Dahua Technology took on the responsibility of securing Yanqing's Olympic Venues and Shougang Park. Guided by the 'Winter Olympics of Science and Technology,' Dahua fully integrated many digital intelligence technologies, such as video Internet of Things, universal sensing, AIoT, and AR, into this grand event, making great contributions to the success of the 2022 Winter Olympics.

Located 75 kilometres northwest of Beijing's city centre, Yanqing has two competition venues, the National Alpine Ski Centre and the National Sliding Centre, and other supporting facilities, such as Yanqing Olympic Village and Publishing Centre. The entire zone is featured with complex terrain and a changeable climate.

Another competition venue Big Air Shougang was located in Shougang

Park. It staged the freestyle skiing and snowboard Big Air competitions at the Games. Big Air Shougang is the world's first permanent venue for Big Air. Following the Winter Olympics, the venue will be used for various sports competitions and athlete training. Meanwhile, many Olympic landmarks, such as offices for the Organising Committee of the Winter Olympics and training venues, have been set up in Shougang Park. The security of the wide range of roads, public areas, all kinds of venues, and supporting facilities in the park was a top priority.

Dahua conducted several surveys in the Yanqing Zone and tailored various intelligent systems such as intelligent traffic camera, AR panoramic solution, walk-through metal detector, ecological environment monitoring system and so on for mountain scenarios. This not only provided a security guarantee for the Winter Olympics events, athletes, audience and staff, but also facilitated the security management of Yanqing's Olympic venues by improving the

overall prevention, early warning and management efficiency.

The mountain road to Yanqing's Olympic Venues is rugged and prone to traffic accidents at night, especially under rain and snow. By upgrading the intelligent traffic camera system in the core road sections, Dahua effectively solved the pollution caused by the white light explosion and flash at night on mountain roads, improving the safety of drivers and greatly reducing the incidence of traffic accidents. Meanwhile, Dahua also realised real-time sensing and intelligent management of vehicle entry and exit, which improved the road traffic management, traffic safety, and civilised travel during the event.

According to the geographical features of the Yanqing Zone and the complexity of management, Dahua innovated and deployed AR panoramic solutions. Combined with the full-realm sensing ability of IoT, Dahua created a large live map that displayed the venues and surrounding infrastructures.

University of St Andrews looks to energy-efficient access control solution to meet sustainability goals

As home of the renowned St Andrews Prize for the Environment, the University of St Andrews has sustainability at the heart of its ethos. For student accommodation, university managers sought an energy-efficient access control solution which respected and reflected these principles.

A major challenge facing the university was that multiple different standalone access control technologies had been separately installed at student halls over the years. To upgrade the ac-

commodation, university managers sought a more suitable, integrated solution.

The university chose Aperio battery-powered electronic escutcheons from ASSA ABLOY Opening Solutions. Approximately 1,600 doors have been equipped with electronic access control — without cabling.

The Aperio devices integrate fully and work flexibly with both the university's existing central system and their student ID card. University security managers continue to

enjoy the efficiency benefits of monitoring and controlling access from a single point and in real time, including for doors in multiple buildings.

In comparison to a wired access control solution, Aperio devices are said to offer significant energy efficiency benefits. Escutcheons are wireless, so can be installed with little energy use and remove the need for wiring to mains electricity. They consume zero energy when idle and run on standard batteries, consuming little power during operation.



**Security
And Fire
Expo** South
India

17 - 18 June 2022
Chennai Trade Center, Chennai

6TH EDITION



SMART SOLUTIONS LEAD TO SMART CITIES

KEY PRODUCTS



Surveillance Cameras
with Night Vision



Digital
Video Recorders



Encoders &
Decoders



Security Alarm
Systems



Audio Video
Door Phones



RFID
Systems



Biometric
System



Access
Control



Electronic
Locks



Entrance
Management
Solutions



IOT &
Home Automation



GPS
Tracking



Anti- Theft
EAS Systems



Security
Gates



Peripheral
Accessories



Storage
Devices



Perimeter Intrusion
Detection Systems



Artificial
Intelligence



UAV
and Drones

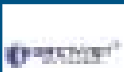
Premier Plus Partners



Premier Partners



Exhibiting Brands



Knowledge Partner



Supporting Associations



Media Partner



Book Your Space:- Sanjeev Rao | M: +91 845293126 | E: Sanjeev.rao@informa.com
Marketing & Alliances:- Pankaj Sharma | M: +91 9971365776 | E: Pankaj.sharma@informa.com

www.safeindiaexpo.com



Through the panoramic map, the staff were able to supervise the overall dynamics and details of the competition area at any time to conduct emergency operations and improve management efficiency and safety. Dahua walk-through metal detectors appeared at the entrances of various venues, to help with fast temperature monitoring, intelligent identification and early warning of not wearing a mask, and rapid detection of metal contraband. This speeded up the traffic and reduced potential security risks timely. The efficiency of security work was promoted at the same time.

The sliding events bobsled, luge, and skeleton are the fastest games in Winter Olympics. Racers moving through the complex and narrow course at super speeds present an extraordinary challenge to the judges' scoring and of course to athletes' safety as well.

Dahua Technology developed an intelligent video tracking system based on their intelligent video sensing capability. The system captured the fleeting video image of high-speed athletes sliding down the track, displayed the video images of athletes passing through different slopes at high-speed seamlessly and orderly, and recorded every detail of the entire competition. With zero interference to the racing tracks, the Dahua intelligent video tracking system provided data support for the athletes' training before the competition and a strong basis for the referee's decision and game's fairness

during the competition.

To facilitate the 'Ecological Winter Olympics,' Dahua intelligent environment online monitoring system was in place to collect environmental temperature, humidity, wind, wind direction, noise, atmospheric pressure, weather and other data of the competition area all the time, to help managers grasp the dynamic changes of various environmental factors in real-time, and provide environmental data support for the events.

In the management centre, Dahua built up a digital intelligent management platform for Yanqing Zone by using video IoT and visualisation technologies including Dahua high-definition LCD screen and distributed seat management system. In this way, real-time views and visual scheduling of the overall operation of the whole competition area were realised. Thus, real-time response and efficient command in the case of emergencies were achieved, while refined management and information decisions were supported.

In Shougang Park, Dahua fulfilled the demand of intelligent management. By applying intelligent panorama, multidimensional sensing, access control management, and other artificial intelligence innovations, based on a unified intelligent management platform, Dahua built a comprehensive modern safety management system covering all roads, public places, and venues in and outside the Shougang Park.

It greatly realised the real-time warning of all kinds of risks in the park, contributed to the innovative upgrade of the security management mode of the park, comprehensively improved the comprehensive services and management of the Winter Olympics. On the field, the Winter Olympics athletes were competing fiercely for medals; outside the stadium, Dahua technical team was trying their best to provide services for both Olympic and Paralympic Winter Games in Yanqing Zone, Shougang Park, National Conference Center and other perimeter areas.

They pushed their limits and accomplished the task of securing the Olympic venues successfully in more than two consecutive months. The team delivered high-quality services including video technology development for specific events, solution formulation, installation and commissioning, and on-site technical support, helping to create a simple, secure, and wonderful Winter Olympics.

Dahua provided security services with high quality and high standards. Based on technology innovations and scenario-oriented application of digital intelligence, it has contributed to the success of many wonderful urban activities and boosted digital intelligence upgrades in thousands of industries. In the future, Dahua will continue to focus on customer needs and create more products and solutions for customers through innovative technologies.

G4S takes care of banking in Ecuador



As a market leader in Ecuador, G4S is the pre-eminent provider of security for the country's banks. Through the combination of highly trained people and G4S's proprietary software application - CVP (Virtual Control of Posts) - the company maintains it provides, a so far, unrivalled security offering to the sector in the country.

"Over a number of years, we have developed our security control room application which is used by all our people on the ground and by our customers," said Elsa Zurita, Commercial Director for G4S in Ecuador. "In real-time, our team can communicate the latest information related to the different sites of operation across the country and provide relevant information that our customers need to know."

CVP is operated on a mobile device such as a phone or tablet and a customer can be updated instantly about an ongoing incident and actions being taken by G4S. Many banks have multiple sites of operation across the country including offices, retail banks and ATM sites.

G4S uses a range of technology and people to protect the different buildings. Alarm monitoring is used widely and this is overseen and coordinated through the G4S central control room in Quito. Any alerts that are set off are notified to the relevant G4S and banking customer team so that swift action can be taken, where needed.

One banking customer, Banco Guayaquil, has 143 sites across the country which G4S secures. G4S has around 180 trained security officers providing services to the bank as well as protective

services specialists, who accompany and protect senior members of the bank's team when they travel to and from work and when they go abroad.

A highly intuitive and Android-based system, CVP is easy for all that use it to become familiar with it very quickly. Personnel use it to update 'quick task forms', which capture data for shift handovers, multiple assignments for that day, virtual log books and visitor access control. It also has an instant messaging system, among many other features.

"CVP allows customers to keep track in real-time of the information gathered by our operational personnel, as well as the visits made by supervisors. This provides them with a complete view of all the services we provide and reinforces trust," said Elsa.

"We work for a number of Ecuador's biggest banks because we provide a very different and much more sophisticated proposition than others and we do this across all of Ecuador's territories," said Elsa. "Our customers, who may be part of multinationals themselves, expect the highest standards from their partners. We meet rigorous international standards in our finances and in the training and employment of our staff, often exceeding government regulations."

Data can be collated and reported relating to many different movements of people, vehicles and suppliers at any given site and this vast reservoir of information is monitored and interrogated for anomalies and potential concerns around-the-clock by G4S specialists. All of the information is stored in the cloud, re-

ducing processing times. The software also allows the seamless integration of other technologies into the CVP, depending on the customers specific needs.

During the Covid 19 pandemic, additional features were added to the CVP app, allowing all communications to be shared directly with G4S employees, so that they know what to do in any given situation.

"If an employee gets sick they can inform us through the app and we can provide support if needed," said Elsa. "Our employees can also manage all their employment information and benefits through CVP which is safe and secure. They can also get in touch with the Human Resources team if they have any queries."

Through the app, customers can keep a track of their many assets such as laptops, phones, ATM's and computers and other equipment of value. Customers are able to download reports in a range of formats so that they know where their assets are. Each asset is fitted with a QR Code allowing the CVP to track in real-time the exact location of equipment, supported by GPS capabilities.

"Customers can evaluate compliance quickly and easily, using statistics we supply to generate their own reports and it means they can react to an emergency situation or incident relating to their assets quickly and hand-in-hand with G4S colleagues," said Elsa. "Customers tell us that CVP helps them to continuously strengthen their internal security controls and procedures as the app is always adapted to their various and often complex needs."

Blackline Safety Corp. expands safety monitoring services



In response to the growing demand for employee protection and a one-stop solution to keep workers safe on the job, Blackline Safety Corp., a globally renowned company in connected safety technology, has announced a major expansion of its round-the-clock safety monitoring service.

The expansion includes growing the Blackline Safety Operations Centre (SOC) – the only in-house safety monitoring service operated by a connected safety vendor, which operates 24/7, 365 days a year – by increasing the company's specially-trained monitoring staff to meet rising user demand in North America. The company was also set to launch its first European in-house SOC in France in spring of 2022, in order to better serve international customers.

"The more the world becomes a connected place, the more businesses are looking for a seamless, end-to-end consolidation of employee safety services," said Sherrie Sawkey, the Director of Global Safety Operations at Blackline Safety Corp.

With the market for lone worker protection in North America and Europe combined estimated to reach more than 260 million in 2022, Sherrie Sawkey explained that the need for enhanced,

consolidated monitoring services is on the rise.

Sherrie Sawkey adds, "Employers want to deal with one vendor for hardware, software and monitoring because it leaves less room for error when every second counts, and that's where we have a distinct advantage. As a result, we're looking to expand the number of our monitoring agents by up to 50 per cent."

Launched in 2015, in order to focus exclusively on safety monitoring through Blackline connected devices, the Blackline SOC is staffed by professionally trained agents, who are experienced in managing safety alerts, including skillfully handling gas and lone worker incidents – from receipt through to resolution, by following each customer's unique emergency response protocol and involving local first responders as needed.

Since then, the Blackline SOC has experienced steady growth, increasing from two agents to 20, who currently handle 800 to 1,000 alerts daily, from more than 37,000 connected devices, including both wearable and fixed safety monitors.

In 2021, after transitioning its dedicated command centre to a remote workforce, due to the COVID-19 pandemic, the Blackline

SOC managed, handled and responded to a record 250,000 alerts for the year, the majority of which were related to high gas levels or missed check-ins.

Only 20 of those alerts escalated to the point where local emergency services were contacted through the 9-1-1 emergency network, with Blackline agents using the company's advanced technology to direct first responders to the exact location of the employees involved.

Blackline's technology is cloud-based, featuring GPS-enabled safety sensors and devices that leverage the Internet of Things (IoT) to connect workers to live monitoring. The platform includes high-performance emergency response and evacuation management capabilities, as well as contract tracing.

Blackline's technology connects employees with software that pinpoints their location, enables back-and-forth information sharing and collects vital data, making it possible to detect the exact location of a gas leak or determine how often workers are travelling through high-risk areas. The company's wearables are offered in two robust models – one connected via a cellular network and another via satellite.

Eaton upgrades its FHF Phone range for hazardous area communications with IP4 capabilities



Power management company Eaton has announced that it is upgrading its popular FHF Phones for hazardous area communications with IP4 technology. The new Eaton FHF IP4 Phones will deliver improved functionality, as well as improved reliability and compatibility, in order to keep workers connected in the most extreme industrial environments.

Commenting on the upgrade, Eaton's Product Manager, Stefan Wosnitza, said "Our industrial grade, weather-proof and explosion-proof Eaton FHF Phones are already trusted in hazardous areas, in many industries, including oil & gas, chemical processing, conventional and renewable power generation, and marine applications, from ports and harbours to cruise ships."

Stefan Wosnitza adds, "They often form part of a safety-critical communications network, so it is important that they maintain the highest levels of compatibility and

reliability, with other essential equipment. The upgrade to IP4 delivers significant benefits for end users in this regard, as well as making phone installation and maintenance much easier."

Eaton took a conscious decision not to alter the physical appearance of this trusted brand of phones, when making the technology upgrade. The established and proven housings have been retained, which makes it easier for customers to replace older Eaton FHF phones over time or to seamlessly extend existing applications.

The IP4 range includes new versions of the InduTel, FernTel and ResistTel phones. The IP4 upgraded versions will be phased in over the coming months, with the weatherproof FernTel IP4 and ResistTel IP4 being the first to market.

The WP FHF FernTel IP4 is equally at home as a desk phone inside or used outside, as a wall-mounted phone. Equipped with a robust

plastic housing, the WP FernTel IP4 can withstand exposure to seawater, harsh chemicals, high humidity and temperatures ranging from -40°C to +60°C, as well as extreme mechanical strain. Available in bright signal colour options, the WP FernTel IP4 is highly visible in emergency, even in poor weather and light conditions.

The WP ResistTel IP4 meets the latest requirements for VoIP telephones and is suitable for mission-critical communications, and life safety applications. Designed for longevity, this telephone features corrosion-free materials that are resistant to acids, alkalis and lubricants, plus a housing made of impact- and shock-resistant GRP. Rated to IP66, it is ideal for use in harsh industrial environments and provides the highest levels of safety and reliability.

Both the WP FernTel IP4 and WP ResistTel IP4 feature a new pixel-based luminous OLED-Display and internal relay to connect a headset and secondary device for visual and acoustic call indication. Optional versions with an additional relay module are available for the connection of external signalling devices. Both phones support additional VoIP protocols and offer advanced software and enhanced cyber security features.

Expert panel dissects fire safety in Mumbai

An expert panel dissected fire safety in the city at a virtual panel discussion. The theme was: "Transforming Mumbai into a fire safe city". This panel discussion organised by Mumbai First, was part of National Fire Services Week, marked in India from April 14 to 20. The week is a tribute to 71 firefighters who died fighting a massive fire at the Bombay Dockyard on April 14, 1944.

The session, moderated by Mumbai First Chief Executive Officer (CEO) Neville Mehta began with a welcome address. Mehta told his online audience that they have an "amazing" panel on board for this semi-

nar. There was Hemant Parab, Chief Fire Officer (CFO), Mumbai Fire Brigade, who Mehta said was, "a new generation fire officer with a very progressive outlook on fire safety management."

M V Deshmukh, panelist, "is full time dedicated to his mission which is a Fire Safe Maharashtra, and chairman, Fire Safe India Foundation," said Mehta and, "Chandrashekhar Prabhu, celebrated and well-known urban planner." Mehta closed introductions and opened it up to speakers stating, "In the past five years, Mumbai has witnessed more than 26,000 fire incidents, exposing the risks and vulnerabili-

ties of city infrastructure to fire hazards."

Chandrashekhar Prabhu began, setting fire-fighting in context. He said, "Let us understand the different aspects of the firefighting canvas. The first is: policy of urban development. If, while making the policy, the issues of firefighting are considered, then the life of the firefighters is made easier. Similarly, a Development Plan of the city, revised every 20 years, has a blueprint of how the city is going to grow in the next two decades. If firefighting is drafted then, the process becomes easier. The third aspect is when devising Development Control



Regulations, the fire-fighting department is consulted, so it becomes a part of the system. The fourth and most important aspect is the implementation of the fire-fighting. If all these four aspects are in sync, they will make our firefighting capabilities stronger."

Prabhu was stressing a holistic approach.

Deshmukh said there were two sides to the fire incidents. "This is prevention of fire and protection during fire. We, as policymakers, are totally responsible for creating faulty structures. We are permitting tall buildings in narrow streets and there is marginal space around the buildings. This does not happen anywhere in the world. Being a developing nation, we have a huge challenge of transforming the

safety culture amongst citizens."

Deshmukh added, "We have SRA buildings that are so tall with eight tenements on a floor, there are queues for lifts. We always compromise on the width of staircases, which are disproportionate to the occupational load of the building. We need to have proper alarms in place and sprinkler systems too. There are thousands of buildings in the city where sprinklers are provided only in the passages. Providing sprinklers only partially is useless."

Fire chief Parab added, "We have started the Fire Volunteers or Agni Rakshak programme with an NGO, so that Mumbaikars can enrol and avail of a day of training on fire prevention. We have trained more than 5,000

Mumbaikars pre-COVID, who are invited to the fire station and then given training on how they can prevent fires and use of extinguishers. We want more Mumbaikars to enrol."

Prabhu made a point that private developers are needed to be incentivised towards creating a small fire station within the vicinity of the mammoth projects they undertake. "This will mean having one more fire station, albeit a small one, to augment our firefighting capacity," while Parab stated, "fire safety audits are a continual process and defaulters are given a notice. Roughly, 120 days are given to the premises to make up for any lacuna. After completion of designated time given and if there is no compliance, we do take action against defaulters."

threat towards fire incidents. As a pioneer in the security industry, our aim is to help India become a fire safe nation."

Mr Ajit Raghavan, FSAI – National President said, "We are pleased to collaborate with Godrej Security Solutions for creating this important initiative, the Godrej Fire Risk Assessor. The FSAI believes in fostering a spirit of safe living among all citizens of India and inculcate a proactive mind-set towards safety and security at all times.

which is why we appreciate that a brand such as Godrej Security Solutions is taking this step. We believe that this will help create more awareness regarding fire safety amongst citizens."

The fire audit will be done at subsidised rates as a testament to the brand's commitment to a fire safe ecosystem. Most of the infrastructure across the country is vulnerable to several fire hazards, often due to a lack of understanding building structure and the right protocols. The impact of fire haz-

ards is significant not only on lives but also on loss of assets, valuable documents, jewellery, etc.

Throughout this campaign #BeFireSafeThanSorry, Godrej Security Solutions aims to increase proactive adoption of security measures amongst citizens and experts alike to fight fire hazards. The Mumbai Fire Department also acknowledged Godrej Security Solutions and FSAI as crusaders for fire safety and have applauded them for this initiative.

Siemens adds IoT components to fire safety portfolio



Siemens is expanding its Cerberus Pro fire safety offering with updated FC720 fire control panels, an IoT-enabled OOH740 detector equipped for disturbance-free function testing, and the Cerberus Connect mobile app that complements the existing Cloud Apps. This move means that service providers, consultants and end customers will benefit from resource optimisation, simplified planning and maintenance as well as higher convenience during operations.

The new FC720 fire control panels provide built-in connectivity through the X200 gateway. This facilitates installation and commissioning processes, saving time and enhancing security. This panel generation comes with an updated periphery board which significantly increases the power on the loop. With smaller pan-

els and fewer loops than before, customers save costs and benefit from reduced planning complexity. Additionally, the panels offer refined software features, thereby optimising operating options.

In addition to the proven ASA technology (Advanced Signal Analysis), the OOH740 Cerberus Pro detector is now also equipped with DFT technology (disturbance-free function test). This means that the detector can be programmed to conduct tests on a regular basis without human intervention. As a result, service providers don't need to wait for the next mandatory check by a service technician, nor physically send someone to test the detector in a building, risking to disturb for instance guests in hotel rooms, staff in meeting rooms, or patients in hospitals.

Cerberus Connect App is a new app in the

Cerberus Cloud Apps portfolio, available both for IOS and Android. Fire safety staff can receive live notifications via a push option, and they can check the status and event history of their fire safety site from anywhere and at any time.

Furthermore, maintenance and regular service visit planning and reporting has been improved by digitalising the process through the Cerberus Cloud Apps. Secured visibility of the connected sites is ensured around the clock, thereby facilitating efficient maintenance planning, execution and reporting. The service provider can plan the visit through the Cerberus Portal, conduct testing on site via the Connect App and then generate compliant reports through the Portal. These can be sent to the customer, who has full visibility of the fire system and can prove compliance if needed.

Godrej Security Solutions and FSAI Launch Fire Safety assessment/audit



Godrej Security Solutions (GSS), India's leading home and institutional security solutions brand, have announced their collaboration with FSAI to launch a customized fire safety assessment, which will identify establishments as fire compliant. This program will be coined Godrej Fire Risk Assessor.

At the unveiling of the Godrej Fire Risk Assessor, Mr Ajit Raghavan, FSAI – National President, Mr. Deepak Ghosh, Deputy CFO, Mumbai Fire Brigade,

Shri. Santosh S. Warick, Chief Fire Officer, MIDC and Director, Maharashtra Fire Services, Mr Suresh Menon, FSAI – National Event Chairman joined, Mr Ashok Menon -National Secretary of Fire & Security Association of India, Mr Pushkar Gokhale, Business Head at Godrej Security Solutions.

Mr Pushkar Gokhale, Business Head, Godrej Security Solutions said, "There is a strong need for organisations to understand if they are fire compliant or not. At

the senior management level, it's important to bring systemic adjustments in the way we build spaces that create a fire safe ecosystem. At the deployment level, it is vital to conduct regular assessments, to ensure that the establishments are fire compliant. Hence, we are partnering with FSAI to drive this attitudinal change and urge organisations to ensure their people as well as their property is kept secure. This is equally critical for residential societies, especially high-rise towers which pose a greater

The importance of "designed-in" security



ADT believes data is the fuel making smart home security systems safer, smarter and more helpful for our customers. Data will unlock next-generation features such as ambient, or always-on, security, for example, and data already enables the smarts in

Industry Consumer Privacy Initiative in 2019, noted ADT Vice President of Product Engineering Mark Reimer, who joined the group to instill Privacy by Design principles across the smart home security industry.

What's more, Reimer pushes privacy as part of ADT's participation in the Connectivity Standards Alliance, which sets standards for how

they unlock additional personalised services, like alarm verification", said Reimer.

"In the coming months, as we move forward with Google and Nest Aware, any alarm data that customers opt-in to share with ADT will be stored securely in Google Cloud Platform where access is gated, authenticated and auditable," commented ADT Chief Monitoring

are always on. You never have to turn them on and off. Your security system should also always be on. Why do you have to arm and disarm it?" she said. "To get to that space, it is going to be a combination of cer-

tain devices in the home as well as data."

Going forward, Young said, data security and privacy are table stakes for the smart home security industry. Companies that fail to deliver on data priva-

cy and security will be eliminated. Companies that protect data privacy and security, on the other hand, will gain access to customer data in exchange for higher value smart home security services

Is AI really necessary for video surveillance?



thermostats that maintain comfortable temperatures while reducing unnecessary energy use when nobody is home. However, the ability to offer these types of services requires customers to trust their supplier to keep their data private and secure. According to ADT Chief Operating Officer Don Young, that is why ADT follows the principles of Privacy by Design, which state that privacy must be incorporated into its platforms and technologies.

"We have built and constantly fortify an architecture that gives customers comfort to share data with us and know that their data is protected and being used to provide value to them through automation, preventative detection and enhanced emergency response," Young said.

Data privacy and security begins with the design of hardware products, which are tested and validated at the ADT Engineering Technology Center in Boca Raton, Fla. All devices in ADT's networked data systems leverage encryption technology, two-way and spread-spectrum communications, Young noted.

To proactively address consumer privacy concerns, lay out industry guiding principles and push the security industry toward greater transparency on consumer privacy, ADT launched the Security

IoT devices and technologies communicate and share data. In relation to privacy, he is working on upholding ADT's 'privacy line' on the types of device data that is made available for sharing depending on a customer's opt-in. ADT, he noted, is embracing the alliance's Matter standard, which helps to ensure devices are reliable and secure as well as seamless to use across manufacturers.

"There're more than 200 companies that are all working together to bring matter to life so that we're all speaking the same language," Reimer said, explaining that when devices use the same language, they can seamlessly share data.

ADT makes sure to confirm each customer's permission (opt-in) before collecting, transporting or storing their alarm data, Young noted. To help ensure transparency, ADT developed clear communications to help educate customers what data ADT would like to access and when, and the value to the customers for sharing it. "Otherwise, customers will share everything, or they'll share nothing."

"For example, if customers allow ADT access to their alarm data, ADT can use it to make more informed decisions about the need for a first responder during an alarm event and offer other helpful services. In addition, when customers share data with ADT,

Officer Larry Folsom.

"We think of this system as a lockbox and then we think of doors to that box," he said. "One door to that box is labelled the customer, one ADT agent and one public safety. The ADT agents and public safety will only have access if the customer specifically gives permission."

The types of alarm data stored in this lockbox will include video as part of ADT's next-generation smart home security platform – if customers choose to share their video data with ADT.

In the case of video capture and usage, ADT asks customers for permission to collect data when a camera detects a person and when an alarm is triggered. If the customer opts into this type of data collection and sharing, ADT can use the data to help verify an alarm event, resulting in a faster, higher priority response from first responders.

"Any alarm data produced by a smart home security device and shared with ADT will remain in the lockbox and will never be sold", noted Raya Sevilla, ADT Chief Technology Officer. Her team is developing an information technology platform to process the alarm data shared with ADT for next-generation services such as ambient, or always on, security.

"Your smoke and carbon monoxide detector

AI is often used as a term to attract organisations with promises of cost savings and, often, unrealistic, levels of accuracy. But is new technology always essential? When it comes to video surveillance, Artificial intelligence (AI) is often presented as a panacea – a technology providing all the answers to all the client's security problems. Not only can it save money, it can also offer unlimited functionality and, some claim, close to 100% accuracy.

However, the truth is somewhat different. While AI does have a growing role within surveillance, it's not without its faults. Nor is it always necessary for video surveillance with many systems on the market able to provide solutions using existing data analytics without the need for investment in complex deep learning (DL) or neural networks that imitate the human brain.

"The way AI works is actually pretty crude," Dean Drako, Founder and CEO of cloud-based video surveillance provider Eagle Eye Networks, admits. "You basically pick thousands of images that are what you want and thousands

of others that aren't what you want. Then you train the system by teaching it." Where cloud-based surveillance companies like Eagle Eye Networks come in is that they can do a lot of training of AI systems, saving companies the time and expense of doing it themselves.

However, according to Drako, standard video analytics is more than adequate for many security applications, such as counting people in a particular area, detecting those who are loitering, camera tampering and spotting cars that are travelling the wrong way. "Although some people are starting to use AI for these types of applications, it's not necessary. You can generally get pretty good accuracy with the latest video analytics."

Inevitably, though, some video analytics systems are better than others. "Traditional systems use BLOB (binary large object) analytics which are not particularly accurate," remarks Jamie Barnfield, Senior Sales Director at IDIS Europe. "They often cause false alarms which means either customers don't use them at all or they respond to an event that's the result of

harmless environmental factors such as a moving branch from a tree or a bag blowing across a car park, instead of an actual human intruder." According to Barnfield the advantage of solutions that use the latest analytics systems is that it helps to reduce the number of false alarms, thereby 'empowering surveillance operators to better detect crime or suspicious behaviour.'

Nevertheless, accuracy is never going to be 100% even with the most advanced analytics or AI systems. "I read about one of the big supermarkets trailing an AI system that used a dataset of 300,000 faces to prevent staff from having to ask how old customers were to buy alcohol and cigarettes," comments IDIS' Jamie Barnfield. "There's no way with a dataset that small that it's going to be accurate enough." Eagle Eye Networks Dean Drako agrees: "If you can't teach a human to reliably tell someone's age then you are going to have a very hard time teaching a computer to reliably do it."

According to Barnfield, not only do some clients have unrealistic expectations about the accuracy of AI-based

video surveillance systems, they can also be a distraction from the organisation's real problems. "Some companies are losing tens of thousands of pounds a day in internal and external shrinkage while they wait for the perfect AI solution when they could be installing a regular HD plug and play system that could pay for itself in the first year," adds Barnfield.

Yet while it's true that not all companies need AI-based surveillance systems right now, demand is increasing as the technology advances and prices fall. For Eagle Eye Networks, which recently bought Bangalore-based AI company Uncanny Vision, there are two main applications where AI in video surveillance offers real benefits over traditional analytics. Firstly, when it comes to video search and, secondly, for real-time alerts.

For example, using an AI-based video surveillance solution it's possible to capture metadata, such as the colour of the clothing someone is wearing or the backpack they are carrying – something that wouldn't be possible using general data analytics. This means that if an eyewitness says they saw someone wearing a black coat and carrying a green backpack acting suspiciously it's possible to input those details into the video search facility and it will find the relevant footage, potentially saving security personnel from watching hundreds of hours of video footage.

Eagle Eye Networks demonstrated an extremely advanced AI based video surveillance solution that captures metadata of everyone entering its US offices as well as an ANPR (au-

tomatic number plate recognition) system that matches car number plates to the precise make, model and colour of each vehicle parked in its car park.

Nor is video search the only advantage that AI video surveillance offers over conventional analytics. It also makes it possible to create much more accurate real-time alerts. For example, Ipsotek, which has recently been acquired by French digital transformation company Atos, has developed a smart petrol station solution for the UK's biggest grocery retailer. Instead of having staff manning its forecourts 24/7, it uses advanced CCTV cameras, coupled with AI-powered BullSequana edge servers, to detect certain events such as individuals trying to use the petrol pumps without a vehicle to fill up, or vehicles spending far too long at the petrol station which could indicate a significant site risk.

These events are automatically sent to a remote monitoring centre which is then able to intervene, often using speakers located on the forecourt to warn potential offenders that they are being recorded. Comments Chris Bishop, Sales Director APAC and Marketing Director at Ipsotek: "The smart petrol station solution, which has been approved by the fire authorities and by UKPIA (UK petroleum industry association), has allowed the retailer to move staff from its petrol stations to the superstores where they can help to stock shelves and refill back of house." The solution has now been deployed at over 300 retail sites across the UK.

Whereas once video surveillance required

large numbers of security staff sitting in a room examining video footage, the latest solutions – many of them AI-based – allow organisations to automate some of the processes, thereby allowing them to make considerable operational savings. For example, Ava Security, now part of Motorola, works closely with SMEs and educational establishments providing cloud-based video surveillance solutions that can be retrofitted to work with existing systems or fitted from new.

And although analytics is still widely used for basic object detection, such as counting how many students are in a particular area, increasingly AI is being used for real-time anomaly detection such as spotting if someone is in a place late at night where they shouldn't be or a vehicle is travelling the wrong way down a road. However, AI isn't a silver bullet, warns Sam Lancia, Ava Security's Co-Founder and Head of Video Engineering: "Like analytics, AI isn't perfect. There's no Skynet here that's magically going to detect that this person walking in is a bad guy and shoot them and lock down the school."

Inevitably, while AI technology can help with video surveillance, it doesn't provide all the answers. Nor does it always offer 100% accuracy, even with the most comprehensive of data sets and deep learning embedded over many years. For many organisations more important is getting the basics right first – installing cameras in the right places and making sure they are all working correctly – before they consider investing in the latest artificial intelligence.



how, where and why is crucial to gaining the most from the technology and delivering a sound business case. Unlocking the full potential of AI to transform the way premises, assets and people are protected will hinge on a greater understanding within the security industry of its capabilities and benefits.

AI advancement and the benefits for video surveillance

Today's network video solutions provide advanced levels of protection at any site. For example, video surveillance cameras, thermal cameras and radar can be used to effectively detect movement at or near a perimeter, tracking intruders that are approaching on foot or in a vehicle, while automated alerts and alarms can be triggered through network (IP) speakers to deter potential criminal activity. Such technology, driven by powerful analytics and supported by AI, delivers superior levels of accuracy resulting in fewer false positives. This reduces the likelihood of a security team being dispatched to investigate a false alarm unnecessarily, leading to cost savings.

Video surveillance has also proved to be a powerful tool for complementing access control systems. At entrance points, automated access control solutions remove the need for security personnel to physically manage and monitor access points 24/7, facilitating a smooth process which uses video surveillance to provide a second factor of authentication. This method is used to accu-

rately identify, authenticate, and authorise personnel, effectively managing and streamlining admissions processes.

Analytics at the edge

Advanced and more accurate video surveillance is enabled by using network security products that have edge-based analytics built in. Detecting and resolving incidents becomes straightforward, and the potential to apply a range of cameras and sensors gives security personnel complete peace of mind in any situation.

Onboard processing power has huge benefits in relation to the recording and analysis of video in real time and the availability of related data. Real-time, rather than forensic 'after-the-fact' data, allows teams to respond to an incident in progress and take preemptive measures by analysing video data as an event unfolds. The ability to process video at the edge, without the potential time lag and energy drain associated with the passing of data back and forth to a server, results in an efficient, cost effective and faster means of video capture and analysis.

And those established providers who have realised the benefits of collaboration over a siloed approach are further enhancing video surveillance processes by advocating open platforms. An open approach facilitates the sharing of best practices and collaboration over hardware and software. In short, this method enables vendors to come together to deliver a customised

best-of-breed solution to meet a customer's exact requirements, often resulting in a solution that is more powerful than anything that one provider could produce in isolation.

Artificial intelligence and deep learning

Collaboration and the sharing of ideas drives innovation. Much of the current thinking on AI and deep learning in regard to the processing of video and use of powerful analytics comes as a result of knowledge sharing between leaders in these fields. Today's fluid, dynamic systems can make use of distributed intelligence for maximum levels of security and efficiency, allowing a non-rigid approach to processing power and a combination of server, cloud and edge capabilities. Technology doesn't stand still, and this approach allows developers to make use of a blend of all of these methods of data processing.

Physical security continues to evolve rapidly, with multiple sensors, intelligence and on-device processing increasingly becoming the norm. Rather than getting hung up on specific technology, the security provider of the future will be required to work collaboratively to create a solution to fit a problem. Deploying analytics and artificial intelligence as a key component of video surveillance will enable businesses to better face their challenges, resulting in powerful cutting-edge video solutions for a smarter, safer world.

How AI and analytics can add value to surveillance capabilities

Cloud connectivity, the internet of things (IoT) and, more recently still, the advancements in machine learning and Artificial Intelligence technology, are transforming physical security into an interconnected system of smart devices and sensors. Such systems are now capable of collecting and processing

data to produce powerful insights, which serve to enhance security and improve operational decision making in many areas.

Here, Axis' Markus Lai considers how AI-powered analytics is boosting and expanding video surveillance capabilities to improve

operational efficiency in a number of different industries.

Choosing the right technology and determining how and where to deploy it can be a challenge for businesses eager to select the most effective tools to meet their specific requirements. Knowing the

Partnering with **Kawach**
will always be a **BRIGHT** idea



SECURITY SOLUTIONS FOR HOMES & BUSINESSES

Established in 1983, Kawach has been the most trusted source of highly efficient and dependable electronic protection solutions for thousands of end users across India. As a Master Distributor of Jablotron, the world's leading European manufacturer of high quality intruder alarm systems, Kawach has access to the latest technological innovations. We provide a full range of wired and wireless alarms with GSM/LAN communicators, central monitoring stations, comprehensive training and support to our business partners.

JABLOTRON
CREATING ALARMS



JA-100. The addressable 4 wire alarm system range

Complete solutions for Intrusion Detection & Alarm Systems
When it comes to making a choice of technologies and devices to protect life and assets, we uncompromisingly leverage our 33 years of hands-on experience to suggest the best technology, field proven devices that fit within the assigned budget. Our arsenal comprises of military grade systems to simple home and personal security systems.

Call today to schedule a training, see a live demo or to place an order...
"Security House"
24-B Udyog Vihar - V, Gurgaon-122016, India
Tel: +91 - 124 - 4001111 | E-mail: info@kawach.com
Web: www.kawach.com

**INDUSTRY
EVENTS**



 SLOVAKIA 06-07 May 2022 Fireco Trencin, Slovakia Lagos Slovakia https://10times.com/fireco	 NIGERIA 10-12 May 2022 Securex West Africa 2022 Lagos, Nigeria https://www.securexwestafrica.com	 UK 17-19 May 2022 International Firex Excel London, London United Kingdom http://www.firex.co.uk/
 INDIA 19 May 2022 Top Indian Women Influencers In Security Hotel Fortune Select Global, Gurugram, India https://tiwis.securitytoday.in	 CZECH REPUBLIC 22-24 May 2022 ASIS Europe 2022 Prague Congress Centre, Nusle Prague Czech Republic http://www.asiseurope.org	 USA 14-17 June 2022 ESX Electronic Security Expo Music City Centre Nashville, TN USA https://www.esxweb.com/
 INDIA 17-18 June 2022 Security & Fire Expo-South India Chennai Trade Center Tamil Nadu India http://www.safeindiaexpo.com/	 UK 21-23 June 2022 Infosecurity Europe Excel London United Kingdom http://www.infosec.co.uk/	 GERMANY 20-25 June 2022 Interschutz 2022 Hannover Exhibition Grounds. Germany https://www.interschutz.de/en/news/news-articles/new-date-for-interschutz-june-2022-11712
 INDIA 06-07 July 2022 International Police Expo 2022 New Pragati Maidan Delhi India www.internationalpoliceexpo.com/	 USA 24-26 August 2022 IAFC Fire-Rescue International Phoenix Arizona USA http://www.iafc.org/fri	 USA 12-14 September 2022 Global Security Exchange (GSX) Georgia World Congress Center Atlanta, USA https://www.gsx.org/
 SAUDI ARABIA 13-15 September 2022 Intersec Saudi Arabia Riyadh Exhibition Center Riyadh, Saudi Arabia https://intersec-ksa.ae.messefrankfurt.com/ksa/en.html	 GERMANY 20-23 September 2022 Security Essen 2022 Messe Essen, Norbertstrasse 2, Essen, Germany https://www.security-essen.de/impetus_provider/	 UK 27-28 September 2022 UK Security Expo 2022 Olympia London United Kingdom https://www.internationalsecurityexpo.com/
 TURKEY 13-16 October 2022 ISAF Security Exhibition 26th International Security Exhibition Istanbul Expo Centre Istanbul Turkey https://www.marmarafuar.com.tr/en/exhibition-programme/	 UK 13 October 2022 Consec 2022 Twickenham Stadium Twickenham United Kingdom https://www.securityconsultants.org.uk/consec	 CANADA 19-20 October 2022 Security Canada Central Toronto Congress Centre Toronto ON https://securitycanada.com/attend/central/
 SINGAPORE 16-18 November 2022 Fire & Disaster Asia 2022 Marina Bay Sands, Singapore Singapore http://www.firedisasterasia.com.sg/	 USA 16-17 November 2022 ASIS 30th Security Conference and Expo Javits Centre, New York, USA https://asisnyc.org/events/conference-expo/	 USA 16-17 November 2022 NDEM Expo 2022 Javits Center New York, NY USA https://www.ndemevent.com/

HIKVISION®
See Far, Go Further

24/7 Colorful Imaging

View in Color,
Even in Darkness

ColorVu
Turbo HD Camera



F1.0 Super Aperture

Collects more light to
produce brighter image.

Friendly Lighting


Soft and warm supplemental light
works to guarantee colorful images
when in zero-light environments.


Advanced Sensor

Vastly improves the
utilization of available light.



Corporate Office:
PRAMA HIKVISION INDIA PVT. LTD.
Oberoi Commerz 2, International Business Park,
18th Floor, Near Oberoi Mall, Off W.E. Highway,
Goregaon (East), Mumbai - 400 063.
Tel: +91-22-4041 9900, 2846 9900
Web: www.hikvisionindia.com

 Sales:
+91-22-4041 9944, 2846 9944
sales@pramahikvision.com

 RMA Support:
+91-22-6822 9977, 3322 6070, 2846 9977, 0250 663 6677
rma@pramahikvision.com

 Technical Support:
+91-22-6822 9999, 3322 6060, 2846 9999
support@pramahikvision.com
Toll Free: 1800 222 699