

# SECURITY Update

## CREATING BUSINESS OPPORTUNITIES



**For Manufacturers, Distributors, Dealers,  
System Integrators & Installers of Security,  
Fire & Safety Systems.**

Vol. 12 No. 04

www.securityupdate.in

April 2022

Pages 16

Price ₹ 75

## Errors to watch out for while installing a CCTV system



There is a wide range of security camera systems available for various requirements. They can contribute quite a lot to safeguarding your home or business. But to make sure they're effective, you need to set them up following the exact process. So, you can't install them just any way that you want to. It is advised that such a task should be left for professional installers to handle rather than make an attempt yourself.

From various reports, it seems there are some common security camera installation mistakes that people make. So, you need to avoid them by all means. In case you don't know what they are, the upcoming information will help you with that.

Security cameras re-

quire to be installed

### 1. Not considering the range

All cameras have a certain range up to which they can capture the surrounding images. Also, you probably have a certain requirement regarding this aspect. Thus, you need to set one according to your requirement. Not only that, you also need to place the camera according to the range of its lens.

People often end up mounting the system at a position from where it can't monitor things properly. A professional service can help you by installing the camera at the appropriate location. If you fail to do this, your camera probably can't capture all the details that you want.

### 2. Ignoring the angle of the camera

No normal security camera can provide you with a 360-degree view.

All of them have a certain field of view within which they operate. So, you need to keep that in mind while proceeding with the installation.

Are you setting up a camera that has a fixed lens? Then, you may like to place it at a corner to get a wider field of view. Many users often place these types of cameras at the centre of a wall. As a result, it often causes quite a large blind spot. This is one of the biggest mistakes that you must avoid.

### 3. Going for the cheapest option

In matters of security, you should give more priority to what best suits your purpose. Not only that, but you'd want good quality and value for money. Now, a cheap CCTV camera can't provide you with any of those things. So, you need to get the one that offers good performance and decent quality. Sure, that might cost more money, but it'll be a worthy investment after all. There are many good options out there that you can choose from.

### 4. Setting up a lesser number of cameras than required

Are you installing only a single camera? That might not be enough in all cases, and you may need to set up more. Especially so in case you're installing them for your business. After all, you need to monitor all activities effectively.

If you install only one camera, it probably can't capture all the crucial areas. So, get more of them and mount them at the right locations with professional help.

### 5. Using cheap cables

Installing security cameras usually takes a good amount of money. After all, it's not a simple task by any means. There are a wide range of aspects to keep in mind while proceeding. Professional services from a good systems integrator or installer will usually get you the desired result. But, they can't do this in case you choose cheap cables for connection.

How does the cable matter in your CCTV system's performance? In case you're wondering, the answer is simple — by bringing down the quality. You may have a top-notch camera, but connecting it with a low-quality cable often ruins its effectiveness. So, you

need to invest in the best CCTV camera quality that you can afford.

### 6. Not weather-proofing outdoor systems

Your camera doesn't face many threats if it's placed indoors. But, it's completely the opposite in case you use it outdoors. So, you need to make sure that it's well-protected from the natural elements. For that, you might want to buy one of the models that feature weatherproofing. Also, in some cases, you may need to provide some additional protection to those cameras.

So, you must take the necessary measures to ensure the device's safety from adverse weather conditions. Otherwise, it might not be long before

you need to repair or replace it.

### 7. Not leaving scope to expand the security system

Setting up a CCTV system at your home or business? The chances are that you may decide to add some more cameras to the system in the future. But, can you do that whenever you need to? In case you're wondering, that's possible only if the recorder allows more connections.

Many times people use a recorder (DVR/NVR) that has the exact number of channels that they need. So, that creates a problem when they finally decide to expand the system. Therefore, you might want to use a recorder with extra (spare) channels.

*Contd... page 10*



quire to be installed properly. Otherwise, they can become ineffective and even get damaged. Avoid the following mistakes while installing a

**PRAMA**  
MADE FOR INDIA - MADE BY INDIA - MADE IN INDIA

CAPTURE THOSE  
RARE MOMENTS

WE NOT ONLY KEEP YOUR LOVED ONES SAFE AND SECURE  
BUT ALSO CAPTURE THOSE RARE LIFE MOMENTS WHICH YOU MIGHT HAVE MISSED.

भारत में बना, भारत का अपना सर्वेलेंस ब्रांड

www.pramaindia.in



Dear Reader

Prices of most electronic products have been climbing for some time now, and video surveillance systems, which easily are the most widely used security products, have not escaped these price hikes. Factors such as rise in input costs and shortage of chipsets needed in the manufacture of camera systems are commonly cited by the manufacturers.



CCTV systems provide surveillance capabilities used in the protection of people, assets, and systems. A CCTV system serves mainly as a security force multiplier, providing surveillance for a larger area than would be feasible with security personnel alone. CCTV systems are often used to support comprehensive security systems by incorporating video coverage and security alarms for barriers, intrusion detection, and access control.

At the beginning of the COVID-19 pandemic, the manufacturing of chips was briefly interrupted. Although the disruption was only short, a significant spike in demand quickly followed, leading to a global shortage of semiconductor chips as homes became the new office, classroom, and entertainment hub. We all realised that our current technical setup wouldn't do. Devices were required to be upgraded to keep every member of every household productive, connected and entertained. Demand for computers, TVs, webcams, speakers, microphones, graphics cards, internet, and gaming consoles spiked up.

Given that chip production was only briefly put on pause, we essentially today have a demand issue rather than a supply issue. And as we continue to digitise every aspect of our lives at a maddening pace, the call for semiconductor chips will continue to skyrocket.

There are only a few semiconductor manufacturers in the world, and they supply to virtually every company that incorporates integrated circuits into their designs. The chip manufacturers were already producing at a high percentage of their total capacity before the rise in demand. Now they're pumping them out at their maximum capacities, and it's still not enough.

These tiny chips are a crucial component of modern cameras and lenses. Like basically every other industry right now, camera companies are struggling to acquire the chip quantities they need to meet their demand. Inevitably this means camera companies will have to prioritise chips based on demand and profit.

The data storage device industry has not been spared either. There is nothing more data-intensive than video. The surveillance industry sits comfortably in the 'Big data' category and with storage retention times running from 30 days typically up to 6 months and longer in some regions/applications, the CCTV market consumes more Hard Disc Drives (HDDs) than many other markets.

As adaptation of cloud computing continues at an extremely fast pace, this, coupled with the explosive growth of data centres and the gaming industry has driven the demand for HDDs steeply upwards. There's some talk that the pressure will ease this year, but most experts predict strong global demand will continue to outstrip supply well into 2023 and possibly beyond.


In this delicate situation, if we were to analyse risk and pool in ongoing trade issues, fire damages and extreme weather events impacting the chip manufacturers, we've got ourselves a perfect storm for a global chip shortage that's been brewing for years.

All of this has had a serious impact on the security industry, CCTV projects are now facing the combined issue of increased delivery times and higher costs. Many manufacturers, distributors and system integrators are doing their best to absorb the price increases where they can, but this is unsustainable over the long term.

The delays with component manufacture and the ongoing increased demand will continue to present a huge challenge to the CCTV and wider security industry. However, good planning and intelligent system design will help projects to remain on track.

Till we meet next month, Stay Safe and Keep Others Safe.

**G B Singh**  
Group Editor

 gbsingh@1stasset.org

 @EditorGB

 linkedin.com/in/gbsingh9



SECURITY UPDATE is a focused educational publication on protection technology, products and solutions. It reaches the business community of manufacturers, distributors, dealers, installers, integrators and consultants of security, fire and safety systems. Printed monthly as a lightweight tabloid, it is easily carried and read on the move, reaching the remotest corner of India, even where the internet may not have reached!

#### General Information

SECURITY UPDATE welcomes manuscripts, news items and photographs, however SECURITY UPDATE is not responsible for loss or damage incurred while in transit or in our possession. SECURITY UPDATE is published monthly on the 28th day of every month. Deadlines are three weeks before this date.



1st Academy of Security Science Education & Training Pvt. Ltd.  
ISO 9001:2008 Certified

All rights reserved. No part of this publication may be reproduced in any form or by any means, electronic, mechanical, photocopying, recording, or otherwise without the prior written consent of the publisher. Opinions expressed in articles or advertisements appearing in SECURITY UPDATE are those of the authors or advertisers and do not necessarily reflect those of the publication, or of its publishers.

Printed, published and edited by G B Singh on behalf of

1st Academy of Security Science Education & Training Pvt. Ltd.

Printed at Ask Advertising Aids Pvt. Ltd.

88 DSIDC Sheds, Okhla Indl. Area Ph-I, New Delhi 110020

Published at "Security House", 24-B, Udyog Vihar-V, Gurugram 122016, Haryana, INDIA.

info@1stasset.org

# ASSA ABLOY's one simple door upgrade ensures a home office is private and secure



Has the growth in working from home (WFH) outpaced the ability to keep a home office environment secure? Hybrid working combining WFH with on-site attendance grew steadily in the decade up to 2019. It is now here to stay.

However, many re-purposed domestic spaces are not equipped with the security or privacy WFH requires. In many organisations, the convenience and productivity advantages of home and hybrid working are significant. WFH will remain at least for some employees, some of the time. In these cases, the security of the home office needs attention.

Home security for hybrid workers does not begin and end at the front door. A domestic workspace requires security of its own. After all, not every houseguest should be reading next quarter's confidential company data! Privacy is another key concern, whether to make important video calls or have a sensitive conversation.

Commercial security is always desirable. In many sensitive industries, it is required by law. Cybersecurity is usually down to the employer. However the physical security of documents, data, and conversations is the responsibility of those who choose to continue

working from home. The most elegant, seamless way to put an effective barrier between the residence and a home workstation is with a Code Handle® digital door lock.

Code Handle is a locking handle with a built-in digital PIN keypad suitable for most lock cases and door types. A secure 4 to 6 digit PIN ensures only authorised people enter the home office. There is no need to use or keep track of a key. At the end of the day, home workers don't even need to remember to lock their office: Code Handle locks itself when the door is closed and for safety, allows a simple,

code-free exit from the inside.

Installation is simple: A homemaker can simply swap their existing door handle for a Code Handle. Fitting takes just two screws: It is easy even for non-specialists, and also straightforward for any domestic locksmith.

To power the lock's digital security, standard batteries slot into the handle itself. There is no need for software. Batteries typically last 30,000 lock/unlock cycles. Code Handle is already trusted at medical surgeries, retail stockrooms, flexible workspaces, and almost anywhere else a private door meets public space. It is perfectly adapted for upgrading a home study, basement, attic or spare room.

Contemporary and elegant, a Code Handle adds digital PIN security without the hassle of keys or any ugly push-button mechanical device. It is the simple, secure, convenient solution for any home office door.

## Codelocks brings CL600 marine grade locks to enhance security for the workplaces and homes by the sea



Codelocks has further expanded its Marine by Codelocks range, giving customers a wider choice of weather-resistant keyless access solutions.

The CL600 Marine Grade locks feature a

specially enhanced marine grade finish that can withstand harsh weather conditions – appropriate for workplaces and homes by the sea, as well as outdoor and coastal applications. The new CL600 Marine by Codelocks range is heavy-duty mechanical locks which are particularly well suited for areas with high levels of traffic and frequent use.

The marine-grade finish resists exposure to salt spray and moisture,

helping to prevent damage caused by corroding. The CL600 Marine Grade locks are smart in appearance too, with a sleek black finish.

The CL600 Marine by Codelocks range has the same features as the easy-to-use mechanical locks in Codelocks original CL200, CL400, and CL500 ranges, but with a robust design built for heavy-duty use.

With the benefits of convenient access, on-

the-door code changes and key override options, and full-size lever handles, the CL600 Marine locks are the perfect solution for workspaces such as boatyards, garages, workshops, or construction sites, where teams of people need continuous access at different times of the day. Marine by Codelocks locks come with a limited lifetime guarantee as well as technical support via phone, email, or the Codelocks support site.

## ProdataKey (PDK) announces the release of their new rugged readers with weather-proof and vandal-proof specifications

ProdataKey (PDK), the globally renowned manufacturer of the leading cloud access control platform built for mo-

bile, has announced the release of its new 'rugged' readers for use with 125 kHz cards and fobs.

The new units, avail-

able in single-gang and mullion style, with or without keypads, improve upon PDK's former 'ruggedised' read-

ers, by combining exceptional weather-proof and vandal-proof specifications within the same model.



PRESENT

**TOP INDIAN WOMEN INFLUENCERS IN SECURITY****19<sup>th</sup> May 2022****HOTEL FORTUNE SELECT GLOBAL, GURUGRAM**

*Globally women are playing a key role in the advancement of the profession of security in all sectors, verticals and levels of the industry.*

*In order to recognise and honour the accomplishments, value and contributions of women in this vital sector of the economy, SECURITY TODAY & SECURITY UPDATE in association with InfosecGirls and WISECRA announce the "Top Indian Women Influencers in Security" recognition for the year 2021.*

*In 2020, this accolade was developed to help recognise women in security in India who made significant contributions in shaping the industry and shaped the path for future generations of professionals. 20 torch bearers were recognised from 272 nominations received in a virtual ceremony by the nation's 1st, most famous & iconic lady IPS officer, Her Excellency, Dr. Kiran Bedi, the then Hon'ble Lieutenant Governor of Puducherry. Distinguished senior people from different sectors were carefully chosen as 'members of the jury' for this event.*

**NOMINATIONS ARE NOW OPEN!**Visit: <https://tiwiis.securitytoday.in>Last date for nominations: 5<sup>th</sup> May 2022

SUPPORTING PARTNERS

SPONSORS





The new rugged readers feature an IP68 weatherproof rating, making them fully waterproof and dust-tight, and an IK10 impact-resistance rating – the highest rating possible. These qualities make them ideal for building exteriors, gates, commercial areas, industrial

sites, and construction yards.

They are also a good choice for schools, given their resiliency against student vandalism. The readers can be used as part of any pdk.io access control system. The new product line's styling is commensurate with its durability. All models

feature a sleek profile, metal zinc casing, and a tempered glass covering, which is wear-resistant, scratch-resistant, and won't crack from extended exposure to sunlight.

For added security, keypad readers can be used to implement two-factor authentication, requiring users to provide credentials and a PIN to gain access. Keypads are backlit so that they are easy to use at night.

For anywhere that readers may take a beating from the weather or mistreatment, these devices offer an excellent solution.

## Hikvision India introduces all-in-one indoor station product for converged security solutions in homes and offices



Hikvision India has introduced its All-in-one Indoor Station product, a tablet device for converged security solutions in homes and offices. With the intelligent indoor station as the management center, users now can enjoy simple control and flexible linkage among various Hikvision devices, including video intercom, access control, intrusion alarm, IP cameras, NVRs, and more.

Through the built-in Hik-Connect application, various Hikvision devices or sub-systems can be managed and monitored by the All-in-one Indoor Station. Video intercom, access control, intrusion alarm, IP cameras, NVRs and other Hikvision devices can be managed with a tap on the touchscreen, including unlocking doors, using the video intercom, video monitoring, arming or disarming an alarm system, and more. Users

can also easily check the status of their devices, network, battery levels, and environmental temperature to better protect their home and office.

Further, with the indoor station, events from various products and sub-systems can be linked together by setting linkage rules through Hik-Pro-Connect, a cloud-based device management application for installers; they can be triggered by each other to implement event linkages. Installers can easily help users to create scenarios for various event types, time schedules, and triggered actions, according to their specific scenarios. For example, an alarm system can be linked to a CCTV system to create the video verification function.

The indoor station is usually fixed in place at an entrance gate or other convenient location, putting the system within easy reach. Users

can complete daily operations conveniently with just a tap when entering or exiting. This video intercom indoor station works with smart Phones and brings a lot of synergy. With the innovative Android based indoor station product, one can do many things while ensuring safety and security.

Hikvision Video Intercom Network Indoor Station is currently available in two models - DS-KH9310-WTE1 (7-inch colorful touch screen) and DS-KH9510-WTE1 (10.1-inch colorful touch screen). The resolution is 1024x600. Both of these models have UI V2.0. They have a user-friendly design. These devices are available in plug and play mode with a standard PoE switch. They can receive video calls and unlock via the client software or the mobile client remotely. It also supports connecting to Hikvision devices to build a management center.

## HALO Smart Sensor 3C from IPVideo Corp



IPVideo Corporation has announced the release of HALO 3C, the latest version of its HALO IoT Smart Sensor, the worldwide leader in vaping and privacy area detection devices. HALO 3C boasts new features that provide users with even greater levels of security and easier installation. The HALO IoT Smart Sensor is at the forefront of solving ever-evolving safety concerns.

HALO 3C now delivers a panic button, 2-way audio communications, indoor health index, emergency escape, alert lighting, motion detection and people counting; while still maintaining individual privacy. These innovative solutions add to the existing award-winning security features of gunshot detection, noise alerts, and emergency key word alerting and still do not use a camera or record audio; making it the perfect security add-on to address facility privacy areas.

This worldwide leading vaping and privacy area detection device is now delivering comprehensive safety and security awareness by means of a carefully selected array of sensors into a cerebral network of metadata.

HALOs work together seamlessly and interact with each other as members of your team- responding and delivering information in real-time.

The HALO 3C new release includes:

- **Enhanced HALO Cloud and New Mobile Device App:** Allows users to receive push notifications of any HALO alert, trigger a panic button, initiate or receive two-way audio communications, and provide the indoor air quality information of the actual room being occupied.

- **Health Index:** HALO 3C provides both a real-time air quality and health index and sends alerts when either index falls into danger zones. It also provides critical automated reports that allow building owners and administrators to demonstrate they are providing a healthy indoor environment and/or validate that facility improvements are needed.

- **Panic Button:** Users can trigger alerts via an external 3rd party panic button or via the HALO cloud app. The location of the trigger is associated to the HALO device in closest proximity.

- **Two-Way Audio**

**Communications:** Users can initiate 2-way audio communications with security personnel using the HALO cloud app or directly through the device when the emergency key word alert is spoken. Location is determined based on HALO proximity.

- **Emergency Escape and Alert Lighting:** HALO 3C comes with a literal HALO of LED colored lighting options that can be programmed to show escape routes for safety, such as a red, yellow, and green pattern, or unique colors for different alerts, such as purple for air quality alerts, or blue for health alerts.

- **Motion Detection:** Identify and alert on movement for occupancy and trespassing.

- **Occupancy and People Counting:** Identify how many people are within the HALO location and configure to alert on abnormalities.

- **Custom HALO Configurations:** HALO 3C comes with the option for customized calibrated industrial sensors. With options for ozone, sulfur dioxide, hydrogen sulfide, nitrogen dioxide, etc. HALO 3C can address specific security or compliance needs.

- **Ease of Installation:** HALO 3C is a surface-mounted device allowing for a quick and easy installation in any location. A new port allows for two devices to connect on the same cable run to cut down on cabling installation costs.

## Matrix launches COSEC ATOM RD100K access control reader to redefine workspace aesthetics



Created with current market needs for access control, Matrix COSEC ATOM RD100K boasts of superior technology covering all the access control needs in demand across the market. Balancing utility and aesthetics, this device brings in a secure environment in workplaces with access

control beyond class.

Matrix COSEC ATOM RD100K, with a minimalistic installation process, easily integrates with the existing system. With the aesthetics that it brings to a corporate environment, it redefines workspace aesthetics. With Credentials such as Mobile-based Bluetooth, PIN, RFID Card, it brings a revolution in your workspace security.

Also, with its third-party integration via the Weigand interface, it can be used to expand and update the existing infrastructure. With its multi-

credential and multi-interface, Matrix COSEC ATOM RD100K optimizes security in the workspace.

Key Features of Matrix COSEC ATOM RD100K are as follows:

- **Multi-Credential Support - RFID Card & Mobile authentication**

- **Multiple Interfaces - Wiegand, RS-232, Exit Switch Interface, Door Lock Relay**

- **Certified protection against Ingress and Vandal**

- **Third-party Integration**



# Motorola Solutions strengthen access control with new Openpath Pro series video intercom reader



Motorola Solutions announced the new Openpath Pro Series Video Intercom Reader (Video Intercom Pro), an access control reader that combines high-quality video, audio, and enterprise call routing into an all-in-one sleek device with a mobile-friendly user experience.

The Video Intercom Pro provides organisations with advanced security to help protect both tenants and visitors and offers security operators real-time visibility via video which enables a faster response to incidents.

Many organisations rely on disparate systems for security from video cameras to intercoms and badge readers to connected doorbells, creating clutter for op-

erators and confusion for visitors.

The Openpath Video Intercom Pro combines all of these capabilities into one device, reducing the cost and complexity of access control while elevating the user experience for both visitors and operators.

Additionally, the high-quality video feeds let security staff receive video calls and alerts in real-time, send digital guest passes, and unlock doors remotely from a smartphone or tablet. This provides security staff the control and visibility necessary for them to better understand and mitigate potential incidents.

With the convergence of functions across the physical security space and demand shifting

away from disparate devices and services in favour of a more blended approach, The Video Intercom Pro emphasises the notion that simplifying life for users is what this market of opportunity is all about.

The Video Intercom Pro is hosted in the cloud, making it highly scalable, configurable, and easy to update with its remote management capabilities. The system is compatible with most existing access control and video security systems and will offer a range of third-party integrations. This allows for each security system to be equipped with the necessary features to best protect their tenants and visitors, as well as the business tools and apps that they use every day.



tion of facilities against man-made and natural onslaughts, particularly for remote or standalone facilities. Similarly, retail stores now have a greater need for more effective barriers to forced entry. The last two years have seen a rapid boom in both organized and opportunistic retail crime resulting in record numbers of burglaries and more sophisticated attacks. In short, neither critical infrastructure facilities nor retail stores can afford to jeopardize the security of their locations and are seeking improved measures for protection.

The ABM Exit Device Series projects steel deadbolts as opposed to traditional latching exit devices. These proven

forced-entry protection measures are available in both concealed models and surface applied models for retrofit applications. With up to five locking points (three separate locking locations on the lock edge, and up to two customizable locking points on the hinge edge), maximum protection against break-ins is provided each and every time the door closes. Saw resistant, free-spinning locking stainless steel deadbolts project a full 1" into the door frame and header, fastening the door to the frame much like a bank vault door. All Securitech exit devices contain additional forced-entry and state-of-the-art vandal-resistant features.

To meet life safety and single-motion exit requirements, a simple push of the interior touch bar retracts all bolts simultaneously, allowing for free egress. ABM also meets today's security signaling requirements by providing optional request-to-exit, bolt position, door position, and other signals. The ABM Exit Device Series is compatible with keying systems and can be integrated with access control systems for electric entry to meet the needs of any facility. Other customizable features include local alarms, alarm signals, vertical or horizontal locking bolt locations, and unique bolt hold back options to meet operational needs.

## Zenitel's launches Turbine Mini video intercom



Zenitel, a supplier of intelligent critical communication solutions, announces the addition of the new Turbine Mini with Video to its ever-growing portfolio of Turbine intercom and intelligent communication solutions.

The new TMIV-1+ intercom from Zenitel provides video surveillance, two-way communications, and remote-entry control, in a low-profile size (117 x 117 x 43.5 mm; 4.61 x 4.61 x 1.71 inches). It is perfect for use in indoor and outdoor environments, including buildings, universities, K12 schools, hospitals, and more.

For video surveillance, the Turbine Mini incorporates first-class video, with HD video up to 1080p resolution and a wide-angle lens that is also NDAA compliant. The ONVIF-conformant solution allows operators and users to see each other in all situ-

ations.

The new TMIV-1+ also incorporates Zenitel's high-definition voice technology, with a 10W speaker and amplifier and active-noise cancelling capabilities. Users can clearly hear and communicate with users even in challenging noise conditions – all thanks to Zenitel's best-in-class audio technology.

In addition, the all-weather capability of the TMVI-1+ intercom makes it a perfect solution for all types of indoor and outdoor environments. The solution is UV resistant, and it can be used in rain or sunshine, and in extremely cold and warm weather temperatures. Even more, its low-profile design allows it to blend into an environment, if necessary.

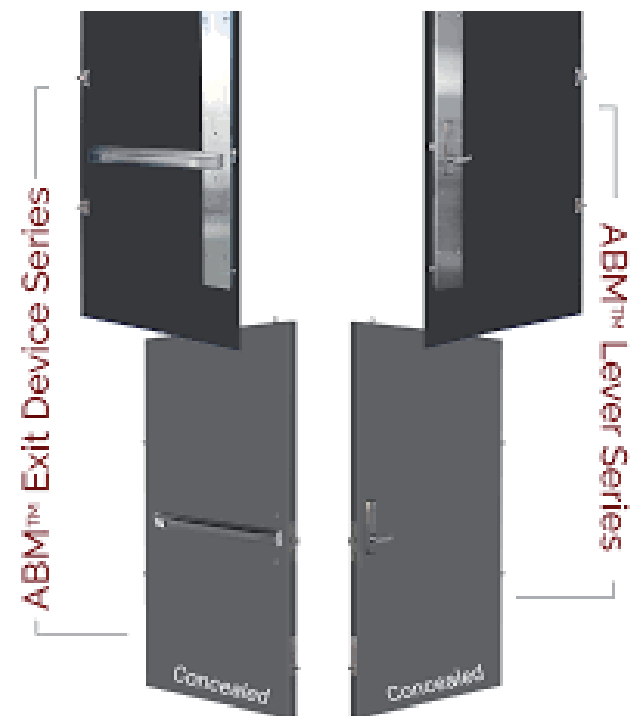
Security users need a low-profile intercom solution with high-definition video and high-quality audio. This is

possible with the Zenitel Turbine Mini. By taking the proven audio and video technology from TCIV+ intercom solution and placing it into a smaller form factor that seamlessly blends into all environments, indoors and outdoors.

Like other intercoms from Zenitel, the new TMIV-1+ intercom can be programmed for use in three different modes: SIP, IC-EDGE, or ICX-AlphaCom, thus making the solution an easy fit with any network requirement.

In addition, the new Turbine Mini is compatible with many VMS solutions, making integration easy. Security teams can use the TMIV-1+ to trigger audio warnings or recordings with a VMS, for instance when a visitor is approaching. In addition, users can record hazardous events and send instant alerts in the event of an emergency such as a break-in or fire.

## Securitech Auto-Bolt Max Exit Device Series



award-winning Auto-Bolt Max™ series.

The launch of the Auto-Bolt Max (ABM) Exit Device Series, designed for doors requiring panic exit hardware, is both timely and needed, with both critical infrastructure and retail industries needing greater levels of protection from forced entry and severe weather events. While these are different threats, a renewed concern for resilient multi-point locking for their facilities looms large for both.

Although critical infrastructure has always prioritized facility protection, world events and an increase in severe weather activities have renewed interest in ensuring the fortifica-

Securitech, the leader in innovative high-security locking devices, announced the official launch of its much-anticipated Auto-Bolt Max™

Exit Device Series. As the American pioneer in multi-point door locking, this fulfills an essential need by expanding the applications for its



## Acre introduces next generation Razberi line



Comnet Products from Acre, has released its next generation of Razberi video management products. The next-gen Razberi Server-switch IQ intelligent video appliance is a high-performance managed Ethernet PoE switch, server, and video storage appliance, part of a complete suite of appliances that provide security leaders with large-scale video recording, scalability, reliability, and automated cybersecurity with remote management.

The Razberi appli-

ance allows cameras, access control points, and other devices to add layers of protection while lowering the threat of cyber security risks to businesses all while reducing needed network bandwidth.

As part of this next generation of Razberi products, an upgraded Remote Monitor and Manage (RMM) service has been added. With this new functionality, Razberi provides a purpose-built RMM service that monitors the entire video ecosystem (camer-

as, network, server, storage, and cyber security). In addition, the new RMM features allow service providers and end-users to remotely manage and install operating system updates, critical security patches, and firmware.

Acre believes the Razberi product line is a cost-effective solution, and its cyber security products can complement Comnet products' emphasis on securing business networks.

- Broad Geographic LPR/ANPR Support: North America, Mexico, EU, UK, India, Singapore, Malaysia, Australia.

Target applications for Eagle Eye LPR include:

- Smart Parking with LPR-based automation.

- Corporate Offices – Secure, smooth vehicle entry/exit.

- Healthcare and Education Campuses – Touchless access control.

- Home Owners Associations (HOAs) and Multi-Family Homes – Neighbourhood safety.

- Critical Infrastructure, Industrial – Multi-site remote monitoring.

- Restaurants, Retail, Curbside Pickup – Improved customer experience.

- Hospitality, and more.

## FLIR launches A50 and A70 thermal cameras to fit the needs of professionals for every industry



When decision-makers seek to integrate new hardware into their automation process, they are often looking at a few key areas: the ease of use, price point, features, and the ability to utilise the hardware at multiple points throughout their system.

The new A50 and A70 thermal cameras come in three options—Smart, Streaming, and Research & Development to fit the needs of professionals across a variety of industries—from manufacturing to utilities to science.

The new cameras offer improved accuracy of  $\pm 2^{\circ}\text{C}$  or  $\pm 2\%$  temperature measurement, compared to the previous accuracy of  $\pm 5^{\circ}\text{C}$ , or  $\pm 5\%$  temperature measurement. The cameras all include an IP66 rating, along with a small, compact size with higher resolution options compared to previous versions.

Featuring a thermal resolution of  $464 \times 348$  (A50) or  $640 \times 480$  (A70), professionals can deploy the A50 or A70 cameras in a variety of capacities. These include condition monitoring programs to maximise uptime and minimise cost through planned maintenance, or when used in early fire detection applications to safeguard the lives of

workers and secure the profitability of the business by protecting materials and assets. With improved temperature measurement accuracy of  $\pm 2^{\circ}\text{C}$ , professionals can rely on consistent readings over a period of time, or through varying environmental factors, eliminating any guesswork from data analysis.

The IP66 rating for both the A50 and A70 provides protection from dust, oil, and water, making the cameras ideal for tough, industrial environments. This ruggedness is especially helpful when the camera is being moved from one application to the next. Whether the camera is fix-mounted inspecting a production line or when required for bench testing, professionals benefit from its versatility.

Designed for condition monitoring programs to reduce inspection times, improve production efficiency, and increase product reliability, the A50 and A70 Smart cameras introduce 'on camera/on edge' smart functionality. This means temperature measurement and analysis can be done on the camera, easily and effectively without the need for a PC. These cameras allow automation system solution providers to hit the ground running with a camera that is easy to add, configure, and op-

erate in HMI/SCADA systems (with REST API, MQTT and Modbus master functionality).

Built for process and quality control, the A50/A70 Image Streaming cameras improve throughput time and the quality of what is being produced, all while reducing operating costs. With its GigE Vision and GenICam compatibility, professionals can simply plug the camera into their PC and choose their preferred software.

In most cases, the addition of A50 or A70 Image Streaming cameras complement machine vision systems that look at defects such as size, with the A50 or A70 providing temperature variance in these products. Primarily used as a research and development solution, the A50 and A70 Research & Development Kit provides an easy entry point into thermal imaging analysis for applications within academia, material studies, and electronic and semiconductor research. The Research & Development Kit includes the Advanced Image Streaming versions of the A50 and A70 cameras and FLIR Research Studio software for camera control, live image display, recording, and post-processing for decision support.

## Eagle Eye Networks launches LPR which uses artificial intelligence in a true cloud-based system



Eagle Eye Networks, the pioneer in cloud video surveillance, launches Eagle Eye LPR (licence plate recognition), which uses artificial intelligence (AI) in a true cloud-based system for high accuracy in all kinds of challenging conditions. Eagle Eye LPR operates on readily available security cameras making it affordable and practical for business owners.

"We're seeing increased demand for LPR/ANPR for security and business optimisation. Eagle Eye LPR is designed to be easy to deploy and manage, and it does not require the purchase of special cameras," said Dean Drako, CEO of Eagle Eye Networks. "Our industry-leading AI not only provides high accuracy, the Eagle Eye cloud LPR is

continuously improved to support new licence plates and increase accuracy."

Powered by Eagle Eye Networks AI and analytics, Eagle Eye LPR works with the Eagle Eye Networks Vehicle Surveillance Package (VSP) to enable seamless monitoring of vehicles across multiple locations.

Eagle Eye Networks supports many manufacturers' LPR products including cameras. Eagle Eye Networks operates an open system giving customers choice. The Eagle Eye Cloud VMS will continue to support cameras and other LPR technologies.

The benefits of Eagle Eye LPR include:

- Camera Agnostic: Works securely with nearly any IP or other

cameras.

- Affordable: Does not require specialty cameras, onsite hardware or onsite maintenance.

- High Accuracy: Eagle Eye's AI provides accuracy even for non-standard licence plates and in challenging lighting and environmental conditions.

- Flexibility: Open API for unlimited integrations with other technology partners.

- Scalability: Manage and add locations, cameras, features with the click of a button.

- Continuous Delivery: AI LPR is continually improved to support newer licence plates, and all Eagle Eye development innovations are instantly delivered to customers via the cloud.



# Hikvision reveals TandemVu PTZ cameras with PTZ and bullet-camera capabilities in a single unit



Hikvision has launched its new TandemVu PTZ camera range, which integrates PTZ and bullet camera capabilities into a single unit. This means that TandemVu PTZ cameras can monitor large areas and zoom in on specific security incidents while maintaining focus on both ‘viewpoints’ simultaneously. These cameras eliminate the need to deploy separate PTZ and bullet cameras in pairs.

Features and benefits of the TandemVu PTZ cameras

The TandemVu technology features Hikvision’s next-generation camera design, integrating multiple lenses in one unit to provide big picture and small details in tandem. The new TandemVu PTZ cameras offer a range of benefits vs. deploying stand-alone PTZ cameras, or pairs of PTZ and bullet cameras mounted together. These include:

- 100% security coverage with no ‘blind spots’

TandemVu PTZ cameras allow security teams to continue monitoring large areas with no interruptions, while simultaneously zooming in to monitor specific security incidents that occur. This ensures that there are never security blind spots related to PTZ zooming, tilting, or panning.

- Extraordinary image performance

The cameras provide high-definition imaging with 2 x 4MP lenses and a super-wide view of 180°, with no image distortion (i.e., no curving of the image at the edges). Specifically, its bullet unit features Hikvision’s signature ColorVu technology, which provides crystal-clear, full-color imaging 24/7; while its PTZ unit employs Hikvision DarkFighter technology that enables excellent HD color im-

ages down to 0.0005 Lux – ensuring that every security incident is recorded in fine detail.

- Optimized security based on smart automation

Engineered with intelligent AI, the cameras are able to differentiate between real security threats and innocent moving objects such as falling leaves, heavy rain, or animals moving. They can also differentiate vehicles and people and use smart linkages to check on trespassers as they move within the PTZ coverage, which is extremely useful for perimeter protection applications.

Customers can also rely on TandemVu PTZ cameras for more advanced security, thanks to its leading AI chipset that facilitates massive computing power. This allows more advanced deep learning algorithms available for complex scenarios, including automatic number plate recognition (ANPR), facial recognition, multi-target-type detection, and others.

- Highly effective sound and light alarms

TandemVu PTZ cameras incorporate a LiveGuard solution using sound and light alarms that warn would-be trespassers before they enter



a site or building. This can help to prevent security incidents, helping organizations to protect their people and assets.

- PTZ and bullet capabilities in one unit for more efficiency and cost savings

TandemVu PTZ cameras significantly reduce installation, configuration, and maintenance costs vs. separate PTZ and bullet cameras. Procurement costs compared to deploying PTZ and bullet cameras side-by-side is also reduced dramatically. As a result, Hikvision customers can achieve major cost savings with TandemVu.

The new Hikvision



TandemVu PTZ cameras

The new offerings are now grouped into two product families that are suitable for different applications and scenarios. Top of the range SF8C series provide two bullet lenses for maximum coverage with 180° panoramic view and imaging quality powered by Hikvision ColorVu technology. They further incorporate top-notch AI algorithms for advanced intelligence. The cameras offer 42x optical zoom capabilities to focus on security incidents close-up. SF8C cameras are suitable for highways, airports, railway stations, city squares, scenic places, and important infrastructure facilities such as power plants.

There are also SE7C series featuring one bullet lens that offers the extraordinary image performance and intelligent functions available with Hikvision ColorVu and AcuSense technologies. The cameras support up to 32x optical zoom, they are ideal for streets, industrial parks, farmland, and parking lots.

## NOW CONTROL YOUR SECURITY FROM WHEREVER YOU ARE

Addressable Intrusion Alarms with Easy BUS (Single Cable) Wiring

**JABLOTRON**  
CREATING ALARMS

JA-100+



- Emergency alarm alerts to the user & authorities
- 24/7 burglary, fire, flood, & CO protection
- Notifications with 3 layers of backup via integrated GSM/GPRS/LAN
- SMS & voice reports from the system to up to 15 users
- Panic & duress modes
- Integrate with CCTV cameras
- Programmable outputs for lights & other automation
- 20 independent calendars to schedule automatic events
- Remote control the system via web/mobile app/call/sms
- Detailed reports pinpointing the individual device
- Door lock control with RFID card
- User friendly keypads with control segments

**APPLICATIONS:**  
HOMES, OFFICES,  
BANKS, FACTORIES,  
BOARD ROOMS,  
LABS, R&D CENTRES,  
SHOPS...



**KAWACH**  
PROTECTION SYSTEMS  
Technology on Guard

Email us today  
for more information:  
[info@kawach.com](mailto:info@kawach.com)

## Hanwha Techwin launches Wisenet Viewer to view and manage different video sources through one interface



Hanwha Techwin, a provider of video surveillance products and solutions, launches Wisenet Viewer 1.0, a new NVR/DVR viewer that makes it simple to view and manage different video sources through one interface.

Wisenet Viewer 1.0 is designed to make video management easy and works with all Wisenet recorders. It removes the need for a dedicated server to manage all video sources, leading to cost reductions and helping to preserve existing investments without new licences or replacing

all recorders.

Through Wisenet Viewer 1.0, operators can view multiple applications on multiple monitors including web pages and images, monitor live video, search and play recorded video, and set event rules like alarms, video and audio analytics, face detection, tampering, and object detection.

The software supports Windows and macOS operating systems. Operators can easily adapt Wisenet Viewer 1.0 to their needs with custom layouts that can

include multiple tabs and windows. Video files can be easily organised and resized with a few clicks. User permissions can also be set and removed through the software.

The Wisenet Viewer 1.0 will make it easier for organisations to manage different video streams, triggered events, and, overall, gain greater intelligence of events happening on-the-ground. Wisenet Viewer 1.0 is easy to set up and saves time and maintenance overheads. It is free when organisations buy a Wisenet recorder.



# Videx GSM technology solves entry challenge for residents



A luxury residential complex in Docklands, East London has opted for GSM technology to help it overcome the entry management challenges residents were facing.

Cyclops Wharf is a riverside development that offers 180 luxury apartments and 24 mews-style houses. The existing telephone-based intercom system operated on technology now obsolete which meant that the running and maintenance of the system, and any repairs or modifications required, were becoming too expensive to manage.

The complex has four external gates and seven blocks so it required a highly flexible and secure system that's easy to use and could be quickly adapted or modified if and when needed. As well as individual entry and access management for residents there needed to be entry management for delivery companies, couriers, and visitor calls too.

Installer Nimata UK recommended that a new door entry system, that operated on up-to-date

technology, was installed. Based on the size of the development, the number of residents, and the level of access control management required, 4G GSM technology was chosen with Nimata opting to install the Videx 4G GSM intercom system.

By replacing the older intercom system with the Videx 4G GSM, tenant service charges have significantly decreased as it costs a lot less to run and maintain the Videx GSM system. The previous system was telephone-based which resulted in increasingly higher telephone charges with multiple telephone lines using the system.

Nimata UK explored other options including 3G technology but wanted a future-proof door entry management system for the complex. The Videx 4G GSM system provides these and more advanced features to deliver future requirements for the development if needed.

The 4G GSM offers a highly convenient and highly secure entry solution that can be tailored

to almost any entry need. It includes many features to make the process of calling an apartment as simple as possible. These include a graphical display with clear instructions through each step of the call and voice announcement to identify the calling process.

The system has been designed with the greatest flexibility in mind and offers programming options via apps, text messages, a web browser and a PC both local and remotely. Our digital 4G intercoms can support up to 1,000 apartments each with coded access and proximity access as additions to the dial to open access control option.

Also the Videx 4G GSM provides temporary access codes and dial to open numbers that can be added at any time for visitors requiring access for only short periods. Up to 10 free access periods can be set up if required allowing visitors free access during certain times. With the combination of its versatility and level of security, the 4G GSM is the ideal entry solution for any building, property or development.

## G4S protects critical infrastructure in Bangladesh

G4S is providing an innovative integrated security solution for Aggreko in Bangladesh, reducing incidents to keep Aggreko's employees and assets safe. Since 2018, G4S has worked with Aggreko Bangladesh, the

world leader in mobile and modular energy solutions, temporary power, heating, cooling and dehumidification equipment.

Aggreko operates two power plants in Bangladesh that provide emer-

gency national grid energy supply. G4S provides an innovative integrated security solution at the 100MW, 14-acre plant in Bramhangaon and the 100MW, 11-acre facility at Aourahati, both in the Keraniganj sub-district of



the city on the outskirts of the capital, Dhaka.

At both sites the perimeter is made up of high fencing, with site wide video monitoring points. The footage is viewed and checked at the central control room located inside the plants by G4S security professionals and issues and incidents are identified immediately. Aggreko is also able to access and view the footage from Aggreko's head office in Dhaka, in real-time.

Across each site, G4S security professionals patrol the compounds and record guard tours and proof of presence using the Secure360 application on handheld, mobile devices.

Along with physical security measures, the installation of video monitoring at the sites has allowed G4S security professionals to monitor the plant effectively. This allows G4S to ensure that visitors to the plants are taking the agreed path and that they have clear oversight of the overall security.

Whenever there is an incident Aggreko management is alerted. A report and any additional information can be notified by email and is followed up by G4S until it is resolved. G4S communicates regularly with the customer, so that they are aware of how the team has responded to a situation.

Periodically, refresher

training sessions are conducted on site to ensure that site specific subjects related to security are well understood and are current and relevant. The session is also used to go over lessons learned from any specific security incidents that have taken place, to inform and equip security professionals with the right information.

G4S took action during the pandemic to safeguard its security personnel and customers, with safety protocols in place across the sites. Classroom sessions were conducted on Covid-19 infection preventive measures, security personnel were supplied with the appropriate personal protective equipment.

## Hochiki to supply the life safety system to enhance fire safety at CCS Consorzio Caseifici Sociali



In 1959, eight dairies in the Parmigiano Reggiano area founded the CCS Consorzio Caseifici Sociali. Over the years, the business has expanded to include the production and maturing of Parmigiano Reggiano.

In 1995, the Granterre Consortium was established, bringing together the entire Parmigiano Reggiano dairy chain, and then almost ten years later, in 2004, control of Parmareggio Spa was acquired. In 2019 Bonterre Spa, the holding company under which the control of Parmareggio Spa and Grandi Salumifici Italiani Spa (controlled by UNIBON) was established.

Then in 2021, Agriform Sca (pioneer in the production of Grana Padano PDO and the main Veneto PDOs such as Asiago, Piave, Montasio, and Monte Veronese) merged with Parmareggio Spa to create the first Italian company in the world of PDO cheeses and cemented this new company as the pioneer in the Italian food industry.

In 2021, the site at Sommacampagna required an upgrade of the fire detection system. Hochiki was the appointed manufacturer to supply the life safety system and devices due to their experience and expertise in the Italian fire safety

market. Within food production sites, the temperature and humidity inside the environment must be carefully controlled to comply with food hygiene laws, and because of this, these sites can be notoriously complex buildings to design and install fire safety systems for.

The customer was looking for a high-performance fire detection system that would not be affected by these environmental factors, and most importantly avoid false alarms which can halt production and cost the company thousands of Euros for every minute the site is not fully operational.





**Security  
And Fire  
Expo** South  
India

**17 - 18 June 2022**  
Chennai Trade Center, Chennai

**6<sup>TH</sup> EDITION**

**informa**markets

# SMART SOLUTIONS LEAD TO SMART CITIES

## KEY PRODUCTS



Surveillance Cameras  
with Night Vision



Digital  
Video Recorders



Encoders &  
Decoders



Security Alarm  
Systems



Audio Video  
Door Phones



RFID  
RFID  
Systems



Biometric  
System



Access  
Control



Electronic  
Locks



Entrance  
Management  
Solutions



IOT &  
Home Automation



GPS  
Tracking



Anti-Theft  
EAS Systems



Security  
Gates



Peripheral  
Accessories



Storage  
Devices



Perimeter Intrusion  
Detection Systems



Artificial  
Intelligence



UAV  
and Drones

### Premier Plus Partners

**COFE**  
PEACE FOR LIFE

**HIKVISION**  
See Far, Go Further

**MARKON**  
Electronics Corporation Pvt. Ltd.

**PRAMA**  
MADE FOR INDIA - MADE BY INDIA - MADE IN INDIA

### Premier Partners

**IN4**



**syRotech**  
Let's Secure

**ZKTeco**

### Knowledge Partner

**MitKat**  
Empowering Knowledge

### Supporting Associations



**ASIS**  
INTERNATIONAL

**ASIS**  
INTERNATIONAL

**ASIS**  
INTERNATIONAL



### Media Partners

**SECURITY  
Update** **SECURITY  
TODAY**

Book Your Space:- Sanjeev Rao | M: +91 845293126 | E: Sanjeev.rao@informa.com

Marketing & Alliances:- Pankaj Sharma | M: +91 9971365776 | E: Pankaj.sharma@informa.com

[www.safeindiaexpo.com](http://www.safeindiaexpo.com)



The installation team also needed to pay particular attention to the installation of cables and piping. As a specialist in aged cheese production, it was imperative that the delicate work of the cheese wheels and the hot marking of the upper layer of the Parmesan rind was not affected during the installation project. One of the benefits of Hochiki products to this project was the ease of installation and ease of use of the devices which had minimal impact on the business.

To meet the requirements of the project, the installer NET Technologies Srl chose Hochiki's pioneer system L@titude to be the brain of the life safety system. This innovative fire detection technology combines the very latest hardware and software to produce a control and indication system which is powerful and sophisticated, yet simple

to use and understand via a graphical interface.

Mirko Corsini, Project Manager at Hochiki Italia said: "The installer chose Hochiki's L@titude panel together with our SPC-ET beam smoke detectors, which are characterised by low power consumption at rest and incorporate a sophisticated algorithm of automatic compensation to environmental changes. The technical features of these products make them perfect for meeting the needs of this type of food processing environment. The flexibility of the Hochiki ESP protocol made it possible, through the CHQ-SZM2/SCI Zone Modules, to integrate conventional detectors (SPC-ET) as if they were addressable devices, without having to use auxiliary power supplies that would have required additional cables and batteries."

Detectors with short circuit isolators were installed to ensure the system complied with the requirements of UNI EN 9795, which states that a short-circuit isolator must be installed for each room/compartment.

Intelligent Photo-electric Smoke detector with SCI incorporates Hochiki's newest High Performance Chamber Technology. This detector removes the need to use ionisation smoke sensors in many applications. This also allows the sensor threshold level to be increased, thereby improving the signal to noise ratio, and reducing the likelihood of false alarms.

Throughout the site Intelligent Loop-Powered Wall Sounder Beacons and Visual Alarm Devices were installed to ensure a fully compliant and state of the art fire safety system.



centre of the K-Mesh system, is hard-wired to the fire alarm control panel loop, and communicates with the wireless devices. Sensors are supplied in three variants: optical; thermal; and multi-criteria, with the optical and multi-criteria sensors featuring signal processing and double dust traps to

prevent false alarms.

Thermal detectors can respond to a fixed temperature threshold or detect a rate of rise in temperature. Wireless sounders, call points and testing kits are also available within the range. According to Kentec, K-Mesh has a 7-10-year battery life and is fully expand-

able and configurable.

With the latest MESH technology, rather than one expander, one can have three, four or even five redundancy paths and the signal connects itself automatically to the strongest expander to create the MESH.

The cathedral has an outbuilding with an old bell tower, so there needed to be a link between the two. But the new wireless MESH is just plug-and-play so and it was just great to see it working.

It is fast to install and less invasive to a building's structure.

Contd... from page 1

## Errors to watch out for...

### 8. Not considering the need for lighting

You'll probably use the system during the day, as well as the night. So, you need to make sure that the cameras can see properly after it's dark. This crucial aspect often skips people's mind. You should consider getting some lighting in the area (scene) that you're going to capture. Or, you must install a system that has enough infrared capability to meet your requirements. That way, you can get the desired results in recording during nighttime.

### 9. Opting for a low resolution camera

Many people often decide to install a camera that has low video quality. They believe that it's not necessary to get a higher footage quality. But, there's no reason for you to think that at all. A high-quality video is always better than a low-quality. After all, more detail gets captured as opposed to the latter. So, you must remove any misconceptions and install a system with optimally high video quality.

### 10. Choosing the right medium of transmission

As you probably know, many security systems have a wireless con-

nection. But, they're not suitable for all users, so you must take that into consideration. A cabled connection is often a better choice, especially if you don't have a strong wireless connection. In any case, you need to choose the right transmission medium as it's such a crucial aspect. After all, it can make a lot of difference in your security system's functioning.

You must avoid the mistakes mentioned earlier while installing a security system. If you fail to do so, you may not achieve your desired end result.

## Kentec's new K-Mesh wireless technology installed in Chester Cathedral

K-Mesh, a wireless fire detection technology from Kentec Electronics, has been installed in Chester Cathedral, a building that can trace its roots back to 1093. Brad Parker, Founder of Charles Thomas Heritage Fire Protection, was tasked with specifying

and upgrading the wireless fire detection system previously installed in the Cathedral.

He opted for Kentec's K-Mesh system, which claims to use self-healing and configuring Mesh technology to deliver optimum levels of reli-

ability and performance. This, allegedly, makes it easy to use, install and commission – ultimately providing assurance that fire incidents are detected and communicated immediately.

A wireless translator module, which sits at the

## Konica Minolta's Intelligent Video Solutions (IVS) and MOBOTIX c26 3600 cameras protect The Swayne Park School



Konica Minolta Business Solutions (UK) Ltd. (Konica Minolta) has announced that its Intelligent Video Solutions (IVS) and MOBOTIX c26 3600 cameras are protecting pupils, staff, and property, at The Swayne Park School, in Rayleigh, Essex, United Kingdom (UK).

The highly accurate and comprehensive 3600 vision capability has enabled the school to reduce a number of analogue cameras (and the associated costs and resources required to operate them), while also enhancing the quality to 4K resolution.

The solution has also provided The Swayne Park School with the flexibility to install the equipment themselves, without the need of expensive third-party subcontractors.

In addition to the 3600 viewing, the solution provides comfort that there won't be any blackspots in viewing, thereby providing 24/7 security for everyone within the school grounds.

The Swayne Park School is using the solution to survey the corridors, dining rooms and vulnerable areas. Konica Minolta's IVS and cameras also deliver unrivalled levels of cyber security with powerful in-built and constantly up-to-date end-to-end cyber protection against hacker attacks - at no extra cost. This market-renowned technology robustly protects the wider IT systems of the school, along with the paramount safety of pupils and staff.

Producing exceptionally high-quality images, even in low light, the Konica Minolta interior cameras are mounted flush to the ceiling and utilise cloud-based technology. They also feature built in and highly secured and encrypted Digital Video Recording (DVR) management technology.

A MicroSD card is fitted into the camera as backup storage, which continues to capture video recordings, should the external network connection or recording fail for any reason. Upon recon-

nection, the camera resyncs the recordings with the central cloud-based storage.

Highly cost-effective and simple to scale to any network size, Konica Minolta IVS solutions make it easy to add more cameras and any required additional storage. No dedicated servers, recording, or software licences are needed, thereby saving time and money, both upon the purchase of the system and during its lifetime.

This low-maintenance solution is perfect for any location, as it has been built to withstand all weather conditions and temperatures, without requiring any additional housing or protection. Additionally, the IVS solution has the capability to use audio to broadcast messages, alerts, and pre-recorded files, in order to support the management of the school.

This will form part of the implementation of a programme of pre-recorded lockdown security drills, with audio files providing guidance for pupils around fire safety, crowd management, and general safety.

Software updates are available via a free download, ensuring the solution can be updated and enhanced as the requirements of the school and its daily operations evolve, thereby making this a fully future-proof solution.



# A closer look at fire safety standards in commercial buildings



The construction industry shoulders a herculean responsibility, when it comes to ensuring the safety of establishments. In India, construction by leading players is done keeping NBC (National Building Code) in mind. NBC provides a set of instructions that comprises building requirements, development control rules, administrative regulations that includes fire safety systems, structural design, construction and stipulations regarding materials, building and plumbing services.

There is a growing need for companies to put in rigorous efforts in training, understanding, implementing and raising awareness around the importance of fire safety, as part of facility management. At Sattva, our focus has been and will remain on standardising processes and systems, combined with years of cutting-edge expertise and experience, to provide a safe ecosystem for our customers and this commitment has earned us the reputation of being a trusted player in the industry.

Fire safety is a fundamental consideration in building design and management and the very basic necessity for every developer is to have fire suppression systems and fire alarms in place. Regular fire drills familiarise employees, tenants and the workforce with evacuation methods and protocols.

Therefore, developers today are focused on aligning utmost fire safety measures to avoid any mishaps. It provides the potential to completely eliminate the risks with fire outbreaks. Fire safety in commercial buildings is an ongoing process and requires a series of active steps to keep your prop-

erty free of any potential harm.

It is critical to train people in facility management and their exists a need to raise awareness on fire safety standards in commercial buildings

The most effective approach varies depending on the organisation and its employees. Facility management includes all aspects of managing an organisation's physical environment, including the buildings, grounds and infrastructure. Without proper training and the right awareness, people may not be aware of all the safety standards that need to be followed in a commercial building.

Developers and architects need to plan on aligning the defined fire safety procedures, during the design/construction phase. They should ensure that the constructed project is compliant, in terms of fire and smoke detection and fire alarm systems.

Maintenance of fire equipment is as essential as training people. All fire equipment requires scheduled maintenance and inspection. As a part of regular maintenance, the technicians should test all equipment and systems, ensure all components are repaired and replaced and record the work performance of all equipment.

Formation of ERT (Emergency Response Team) is mandatory. The team members should be trained on appropriate emergency response activities. These activities consist of evacuating the danger zone, closing main shut offs, calling for an external aid and initiating rescue operations.

Fire Safety awareness, therefore, plays a crucial role in encompassing a

long-term strategy for preventing any emergency situations. Fire Safety awareness comprises of three essential elements –

- Fire prevention
- Fire protection
- Fire suppression

Learning how to respond to a fire is a large part of fire safety awareness and training and is essential in understanding protocol in case of an emergency for people to be aptly prepared.

Real Estate has been at the forefront of adapting and developing solutions for better, safer and more efficient ways to have safety protocols in place. Mass notification systems and “internet of things” are navigating the evolution of fire safety measures in the industry. Technology, today, plays a crucial role in safety and it continues to evolve and improve each day. The industry is becoming smarter with smart products today, some of the smart products that ensure your fire safety is –

- Smart Plugs/Outlets
- Smart Stovetop with fire prevention
- Smart Fire Detectors
- Smart Smoke Detectors
- Smart Batteries
- Fire Resistant wiring

Top three learnings for budding commercial players for ensuring best-in-class fire safety standards

To have best-in-class fire safety standards, there are 3 basics

1. Strict adhering to the NBC (National Building Code)
2. Focus on fire safety awareness and training
3. Staying abreast with the latest technologies in the industry

To conclude, the single best way to eliminate fires is to eliminate the risk of fires. Raising the bar of awareness on fire safety will eliminate the risks and damages caused by fire mishaps.

*Credits: Pradyumna Mishra, VP – planning, procurement and facilities management, Salarpuria Sattva Group*

# Door closers as a crucial mechanism in fire door safety



Once again, the role of fire doors in keeping people safe from tragedy was underlined in January, as a blaze in a New York City apartment block killed 17 people. The fire, which was the deadliest in the city for over 30 years, was said to have quickly spread thanks to an open door in the apartment block – one that was designed to have a self-closing mechanism on it to prevent such a tragedy.

Much has been said about fire door safety – particularly in the UK in the wake of the Grenfell Tower fire, where the local council was forced to apologise for not acting fast enough to install efficient fire doors after it was found many were not working or missing altogether. But, how important are self-closing door mechanisms as a component in this field?

To summarise the opinions of experts – they are crucial. Officials in New York argue that the death toll would have been significantly lower if the self-closing mechanism had been working. Such components take the risk away from placing the responsibility on tenants to close doors – which is not always part of the daily routine, or at the forefront of their mind when evacuating in the event of a fire.

At a press conference following the events in New York, FDNY Commissioner Daniel Nigro said: “The door was not obstructed. The door, when it was fully open, stayed fully open because it malfunctioned.”

A fire door is made up of several door furniture components, all of which should be specified and tested in line with the door leaf. And, Richard

Wilson, Product Manager for Door Closers at ASSA ABLOY Opening Solutions EMEA says, the door closer device is arguably the most important item of the architectural hardware, as it ensures the closing of the door to provide an efficient passive barrier to prevent further spread of the fire and smoke.

Though, as Richard also notes, it is essential that the correct type of door control is specified or selected and installed correctly in the first place, to ensure that not only does the product provide effective compartmentation but also prevents its misuse or removal.

Appropriate doors for door control use can include examples such as:

- Corridor doors – Use of EN1155 electro-mechanical hold open devices
- Room or apartment doors – High efficiency door controls with low opening forces
- Areas subject to abuse – The use of concealed type door controls, floor springs or transoms to limit tampering or unwanted adjustment

Recent tragedies have clearly placed further emphasis on this argument, and the importance of full fire test coverage from independent testing bodies. Richard adds: “The majority of architects and specifiers are now insisting on full primary fire test data (primarily from door manufacturers) from an accredited third-party testing house.”

In Ireland, they've gone a step further with new fire regulations introduced in 2018 stating that “all fire doors should be fitted with an automatic self-closing device which is capable

of closing the door from any angle and against any latch fitted to the door [p.80]”.

Meanwhile, in England, Approved Document B states that a self-closing device is required on a fire door if:

- Subdividing escape routes to separate two or more storey exits
- Subdividing corridors every 12m in length
- Subdividing a dead end condition in a common corridor exceeding 4.5m in length
- Protecting a staircase enclosure from a circulation space
- Doors opening onto external escape stairs

In addition, in all residential type buildings, all fire doors should be fitted with a self-closing device, while self-closing devices should be fitted to the front door of each flat as well, to ensure separation of the flat from communal areas.

Historically, fire door safety in general has been overlooked, but incidents in the last few years have led to them being recognised as safety critical features, providing fire compartmentalisation and protection to all fire escape routes.

Richard concludes: “We believe that the appointment of a Building Safety Manager, combined with open dialogue with residents, will ensure that fire safety is an ongoing commitment and the responsibility of all building users. In particular, it is vital that residents of these building types are educated in terms of passive fire safety protection and the component parts that make up this. Active and passive fire protection working together is the safest way to ensure continued fire safety.

“On top of this though, we recommend that the importance of fire doors, and of their correct use, is made a priority when sharing information with residents. In particular, residents should be made aware of the importance of working self-closers on all fire doors. As recent events have demonstrated, they are a crucial part of the protection provided by fire doors, and can take some of that responsibility away from residents to save lives.



# Basic essentials for how businesses can prevent fire hazards in mass return to work



Fire safety has always been a crucial aspect of facilities management. Every business or organisation that has a physical working environment must have health and safety precautions, including precautions for potential fires and how they are dealt with, in place.

In this article, Peter Martin, Operations Director of Fire and Security at JLA, offers 5 basic essentials for how businesses can prevent fire hazards, creating a safer environment for all.

Over the last two years, COVID-19 has shattered the status-quo of office life by sending most of the country to their homes for remote working. While the threat of COVID is still present in newer forms such as the Omicron variant, the majority of the restrictions have now ended and health and safety guidance from the government is encouraging businesses to return to the workplace when possible.

This means fire prevention is more important than ever, yet some businesses still lack the basic fire hazard training and discipline to follow it, which may be endangering businesses across the country. For example, interior fire doors are all-too-often left open for “fresh air”, entirely negating their purpose of stopping fires in their tracks before they can cause more serious harm. Given the increased focus on infection control following the height of the COVID-19 pandemic, business owners and facilities managers must pay particular attention to this, as staff are even more likely to leave fire doors open to facilitate ventilation throughout the facility.

According to govern-

ment figures, incidents of fires in the workplace had increased six-fold over the decade leading up to March 2020, and therefore, it is clear that workplace fire safety is an ever-growing concern. But where should businesses be focusing their efforts?

As businesses welcome workers back to offices, here are 5 tips for how businesses can prevent fire hazards, creating a safer environment for all.

## Check fire alarms

Fire alarms are the first defence in a fire emergency, which means they're an essential piece of equipment that must be maintained or replaced when necessary. Since many workplaces have been left unattended due to remote working, it's now the perfect time to test fire alarms with workers being encouraged to go back to sites.

While testing alarms promotes good fire safety, it's also a legal requirement to ensure fire alarms are working properly. The law states that fire alarms in workspaces must be regularly tested to ensure they work as required. According to a survey conducted by JLA, it is said that just 20% of businesses in the UK only get their fire alarms tested once a year, which is a troubling statistic.

Fire alarms must be tested regularly in order to determine that they work when needed, aren't susceptible to false alarms, emit the proper noise and can be heard by those in the area for their own safety. Failing to have them frequently tested ultimately puts lives at risk.

## Refresh fire safety training

Fire safety training can take many different

forms, such as what to do in a genuine emergency, the fire fighting procedure, or a false alarm procedure. What to do in a genuine fire emergency scenario is arguably one of the most important things someone needs to know when working somewhere. In order to preserve lives, it's crucial that everyone knows information such as where emergency exits are located, how to behave during an emergency, and where to gather when outside the premises.

Employers have a legal responsibility to train employees on these procedures.

Fire training is also important and safe workplaces will have fire extinguishers and fire blankets on site for employees to use. Knowing where these are located and how to operate them in an emergency can help prevent small fires from spreading across the workplace and causing any significant damage.

False fire alarms can also occur from a number of sources such as the alarm itself having a fault, unnecessary smoke in the building whether it be from people or appliances, or even hot steam in the air. While it is obviously a priority to prevent a false alarm, it is important to still have a procedure in place to determine if it is a false fire alarm, or if action does need to be taken. Training staff on the dangers of false alarms and how to prevent and react to them, as well as testing a facilities' fire alarm's responses, will maintain good health and safety measures and ensure that the workday isn't jeopardised by a preventable mistake.

## Consider the storage of waste and other materials

Safe storage of waste and other flammable materials can help to prevent the spread of fire if one breaks out. Highly combustible material and recyclables, such as paper and cardboard, should be stored away from places of potential ignition, such as heaters or electronics. Keeping these materials in a designated safe storage

area will reduce the risk of them catching alight and causing a fire. Any build-up of these materials is also dangerous, so storage levels should be checked regularly and cleared when possible.

Keeping the office or facility clean is another way that fires can be prevented. Rubbish bins, especially those containing paper, should be emptied when they get full, and regular dusting or cleaning also promotes good fire safety practice, especially dust build-up around electrical outlets.

## Maintain equipment and machinery

Faulty electrical equipment is one of the leading causes of fire in the workplace, so it's important for businesses to keep their equipment organised and maintained to reduce the risk of them developing a dangerous fault.

Loose wires and cables are the main problem, especially when they're tangled up with other wiring. Businesses should check areas where wires may have crossed with each other, such as under or behind computer desks and de-tangle if necessary.

It's also a good idea to check the wires for any tears on the outside of the cable. If you can see any of the copper interior, they should be replaced immediately.

Plug sockets are another offender of faulty electrical equipment. In a busy office or facility, it's likely that a lot of machines and appliances will need to all be running at once, so it's even more likely that extension leads will be used to keep everything switched on. While they have their uses, they use a lot of energy, which means they can also generate a lot of heat, which can cause a fire if left unattended. Always switch plugs off overnight or when something isn't in use. Unplugging certain appliances that may not be used often is also a good idea.

## Ensure fire exits are maintained

Emergency fire exit doors are also a vital piece of equipment, which means they must be treated properly to ensure that they work as intended. Does the fire door open and close when needed? Are they easily seen and obvious as fire exits? Is it easy to get to them?

Fire exit doors must always be shut properly when not needed and should never be propped open to ventilate a room. If the door won't close properly, there is a fault that must be addressed. Additionally, they must be accessible in an emergency. Never use the space in front or behind the door for storage. Ensuring that the area surrounding it is clear of obstruction at all times should be a continuous priority.

Fire safety, which has always been a business-critical imperative, is an increasingly important consideration for businesses in 2022, as working patterns move away from remote working. Returning to normal workplaces can be a challenge, but making sure that these sites are fire safe is something all business owners and staff members need to be aware of.

By testing fire safety systems regularly, refreshing any fire safety training and having all the correct safety measures in place, businesses can rest assured that they can safely welcome all employees back to the workplace as safely as possible.

# Climax Technology BL-3



The BL-3 Bluetooth Emergency Pendant is a small wireless panic button that partners with a smartphone application allowing the user to summon help with one simple button press when an emergency arises, inside and outside the home. When it's button is pressed, BL-3 utilises its Bluetooth connection with the smartphone app to immediately report an alarm and relay the user's GPS location directly.

During sudden, life-threatening situations,

users may not have the opportunity to unlock and make a call on their smartphones for help, and BL-3 can send an alarm and GPS location to caregivers and authorities immediately. This extra level of protection can significantly increase response and rescue time.

Furthermore, BL-3 will blink or chirp to remind users it is out of range of the smartphone or when it is shut down. It can also integrate with smartphone applica-

tions to control features like step count on their smartphones, and receive low battery notification.

The product is waterproof, lightweight and has an easily changeable battery, which can be changed simply with a coin. Coming with powerful and easy-to-use features, BL-3 is the perfect companion for seniors who want to stay active and safe, providing help just a button touch away anywhere, anytime.



# Technology ethics in defence & security



There are few sectors in which decisions concerning ethics are as consequential as those faced by defence. While life-or-death ethical dilemmas are not unique to defence, poor judgement can lead to widespread and enduring catastrophe on scales



unparalleled in any other sector. As a community of innovators, how great is our share of the responsibility for ensuring the ethical development of defence technology? Here, experts from Qinetiq, the UK defence and security giant, explore the ethics of emerging technologies such as Artificial Intelligence and Robotics & Autonomy.

You don't have to look hard to find historic examples of defence technology that have had a negative impact on global stability. If nuclear weapons had not been invented at all, the lives of thousands of Japanese civilians might have been spared, and the Cold War would probably never have happened. However, there is a possible world in which Nazi Germany was the first to assemble a nuclear armoury; or another in which unending war in the Pacific caused greater suffering than the atomic bombs dropped on Hiroshima and Nagasaki.

Could it be that the devastating real-world outcome was actually the 'least worst' of the most likely scenarios? As the debate continues to rage among philosophers and historians almost 80 years later, it is clear we will never have definitive answers to these questions – and yet the conversation remains as vital as ever. We cannot change history, but we can influence the future. Today, we as innovators must pause

to consider how our legacy will be remembered another 80 years from now. The question we must continually ask ourselves while pursuing technological advances is: just because we can, should we?

There has always been a tension in defence between taking sufficient time to consider the ethical implications of new technologies, and deploying

their capabilities quickly and decisively enough to maintain the advantage over adversaries. This tension is growing in the 21st century as technology advances at an ever-increasing rate; becoming more powerful, diverse, and accessible.

Consequently, there is a higher risk of knee jerk decision-making in response to emerging threats. To counteract this, it is vital to maintain an up-to-date understanding of emerging technologies and their potential ethical pitfalls. What follows in this article is by no means an exhaustive list, but a sample of today's defence technologies and a brief overview of the ethical considerations surrounding them.

Much has been written about the threat of the 'singularity' – the point at which artificial intelligence (AI) supersedes human intelligence, resulting in AI's uncontrolled expansion. The likelihood of this event is the subject of ongoing dispute – but there are other, more immediate concerns about AI in the present day. The unconscious biases of programmers can make their way into the datasets on which AI technologies base their decision making.

A 2018 study by the Gender Shades project, published by Massachusetts Institute of Technology (MIT), found facial recognition technology to be significantly and consistently less accurate in identifying

young dark-skinned women than any other group. Facial recognition is already being trialled in law enforcement applications, where mistaken identity or poorly-considered profiling techniques could have disastrous impacts on individuals' civil liberties. In the US, Robert Williams, an African American, was arrested and held for nearly 30 hours after facial recognition software used by the Detroit Police Department misidentified him as a shoplifter.

There are two actions that should be taken immediately to help rectify these issues. The first is the diversification of computer and data scientist communities, enabling minority groups to be better represented in AI design and decision-making processes. The second is ensuring decisions made by AI machines are explainable to those affected. If an AI outcome is presented as evidence in a court case, the jury, defendant, and all other parties must be able to understand the process by which the computer arrived at its conclusion. It is not enough to take a 'computer says guilty' approach when the system is less than infallible.

In a world where AI makes decisions, it follows that robots will often act upon those decisions to generate real-world effects. There are some applications for which there is an explicit ambition to remove human decision making entirely – the driverless car being among the most high-profile. Fatal accidents involving prototypes of these vehicles have led to court cases seeking to allocate responsibility to one or more humans, with the aim of redressing harms, deterring recurrence, and demonstrating that justice has been served.

There are some defence applications for which full autonomy is largely accepted, such as the use of self-navigating land and air vehicles to deliver aid and supplies in dangerous regions. However, controversy surrounds the possibility of developing weapon systems capable of making 'kill decisions' without human intervention.

All of the same concerns about AI apply here, but with the added risk of lethal outcomes. Several countries' governments, and a number of defence technology

companies (including Qinetiq) have publicly announced their commitment not to develop fully autonomous weapons where there is no human in the loop to au-

thorise firing decisions. Finally, irrespective of its likelihood – if the singularity were to occur, you would certainly not want it to happen in a robot equipped to kill.

## Protecting Debit or Credit Card from being hacked



At a time when the world is relying on the internet for carrying out various works during the pandemic, cybersecurity becomes extremely important. Financial transactions are always on the target of malicious hackers. A report released by NordVPN shows that using a computer, an average payment card can be cracked in only six seconds.

The global VPN service provider, used by millions of internet users worldwide, analysed four million payment cards from 140 countries and has found 'brute force' as the most common method to hack a payment card.

This type of attack is incredibly quick and can be executed in a matter of seconds, it said.

NordVPN Chief Technology Officer Marijus Briedis said, "The only way such a huge number of payment cards could appear on the dark web is through brute-forcing. That means that criminals try to guess the card number and CVV."

Briedis added that the first 6-8 digits are the card issuer's ID number. "That leaves hackers with 7-9 numbers to guess because the 16th digit is a checksum and is used only to determine whether any mistakes were made when entering the number. Using a computer, an attack like this can take only six seconds."

To guess the nine

digits that are needed to have a full card number, a computer has to go through one billion combinations, Briedis said. "And, it will only take one minute for a typical computer, which can try around 25 billion combinations per hour."

However, depending on the card issuer, a criminal may need only seven digits to make a correct guess. "In this case, six seconds would be enough," he said.

### Whatt Debit, Credit Card Users can Do ?

Briedis said card users need to review their monthly statements for suspicious activity and respond quickly and seriously to every security notification from their bank.

"Another recommendation is to have a separate bank account for different purposes and only keep small amounts of money in the one your payment cards are connected to. Some banks also offer temporary virtual cards you can use if you don't feel safe while shopping online," he added.

In September last year, the Reserve Bank of India (RBI) had also warned the public against upticks in fraudulent activity. Through a tweet on September 13, the central bank had cautioned people against bank fraud related to Know Your Customer (KYC) documents. The apex bank warned people in its tweet and

its press release against sharing their personal account-related information with scammers.

The central bank also said people should not share certain personal details such as login information, card details, PIN number or even one-time passwords. The tweet issued by the RBI said, "RBI cautions against frauds in the name of KYC updation."

In a statement, the RBI also said, "The usual modus operandi in such cases include receipt of unsolicited communication, such as, calls, SMSs, emails, etc., by customer urging him/her to share certain personal details, account/login details/card information, PIN, OTP, etc. or install some unauthorised/unverified application for KYC updation using a link provided in the communication."

It added that such communications are also reported to carry threats of account freeze/block/closure. "Once a customer shares information over a call/message/unauthorised application, fraudsters get access to the customer's account and defraud him/her."

"Members of the public are hereby cautioned not to share account login details, personal information, copies of KYC documents, card information, PIN, password, OTP, etc. with unidentified persons or agencies," added the apex bank.



# Seeing eye to AI - How smart video is shaping the edge



The evolution of smart video technology continues at pace. As in many other industries, the onset of the COVID-19 pandemic expedited timelines and the artificial intelligence (AI) video world is continuing its rapid evolution in 2021.

As video demand and the use of AI to make sense of the visual data increase, the number of cameras and subsequent data produced are growing rapidly, and these are forcing the creation of new edge architectures.

In addition, a new generation of 'smart' use cases has developed. For example, in 'smart cities', cameras and AI analyse traffic patterns and adjust traffic lights, in order to improve vehicle flow, reduce congestion and pollution, and increase pedestrian safety.

'Smart factories' can leverage AI to detect flaws or deviations in the production line in real time, adjusting to reduce errors and implement effective quality assurance measures. As a result, costs can be greatly reduced through automation and earlier fault detection.

The evolution of smart video is also happening alongside other technological and data infrastructure advancements, such as 5G. As these technologies come together, they're impacting how we architect the edge. And, they're driving a demand for specialised storage.

Listed below are some of the biggest trends that we're seeing:

Greater volume means greater quality

The volume and variety of cameras continue to increase with each new advancement, bringing new capabilities. Having more cameras allows more to be seen and captured. This could mean having more

coverage or more angles. It also means more real-time video can be captured and used to train AI.

Quality also continues to improve with higher resolutions (4K video and above). The more detailed the video, the more insights can be extracted from it. And, the more effective the AI algorithms can become. In addition, new cameras transmit not just one video stream, but also additional low-bitrate streams used for low-bandwidth monitoring and AI pattern matching.

Whether used for traffic management, security or manufacturing, many of these smart cameras operate 24/7, 365 days a year, which poses a unique challenge. Storage technology must be able to keep up.

For one thing, storage has evolved to deliver high-performance data transfer speeds and data writing speeds, to ensure high quality video capture. And, actual on-camera storage technology must deliver longevity and reliability, critical to any workflow.

Real world context is vital to understanding endpoints

Whether used for business, in scientific research or in our personal lives, we're seeing new types of cameras that can capture new types of data. With the potential benefits of utilising and analysing this data, the importance of reliable data storage has never been more apparent.

As we design storage technology, we must take the context into consideration, such as location and form factor. We need to think of the accessibility of cameras (or lack thereof), are they atop a tall building or maybe amid a remote jungle?

Such locations might

also need to withstand extreme temperature variations. All of these possibilities need to be taken into account, so as to ensure long-lasting, reliable continuous recording of critical video data.

Chipsets are improving artificial intelligence (AI) capability

Improved compute capabilities in cameras means processing happens at the device level, enabling real-time decisions at the edge. We're seeing new chipsets arrive for cameras that deliver improved AI capability, and more advanced chipsets add deep neural network processing for on-camera deep learning analytics. AI keeps getting smarter and more capable.

Cloud must support deep learning technology

Just as camera and recorder chipsets are coming with more compute power, in today's smart video solutions most of the video analytics and deep learning is still done with discrete video analytics appliances or in the Cloud. To support these new AI workloads, the Cloud has gone through some transformation. Neural network processors within the Cloud have adopted the use of massive GPU clusters or custom FPGAs.

They're being fed thousands of hours of training video, and petabytes of data. These workloads depend on the high-capacity capabilities of enterprise-class hard drives (HDDs), which can already support 20TB per drive and high-performance enterprise SSD flash devices, platforms or arrays.

Reliance on the network

Wired and wireless internet have enabled the scalability and ease of installation that has

fuelled the explosive adoption of security cameras, but it could only do so where LAN and WAN infrastructures already exist.

5G removes many barriers to deployment, allowing options for expanding, placing cameras with ease of installation at a metropolitan level. With this ease of deployment comes greater scalability, which drives use cases and further advancements in both camera and cloud design. For example, cameras can now be standalone, with direct connectivity to a cen-

tralised cloud, as they're no longer dependent on a local network.

Emerging cameras that are 5G-ready are being designed to load and run 3rd party applications, which can bring broader capabilities. Yet with greater autonomy, these cameras will need even more dynamic storage. They will require new combinations of endurance, capacity, performance, and power efficiency, to be able to optimally handle the variability of new app-driven functions.

It's a brave new

world for smart video, and it is as complex as it is exciting. Architectural changes are being made to handle new workloads and prepare for even more dynamic capabilities at the edge and at end points. At the same time, deep learning analytics continue to evolve at the back end and the Cloud. Understanding workload changes, whether at the camera, recorder, or the Cloud level, is critical to ensuring that new architectural changes are augmented by continuous innovation in storage technology.

## A focus on video tech opportunities for campus security



A newly published e-book from Idis explores the vital role of video technology in creating safer, more welcoming learning environments – and it gives advice to users on not paying too much for their technology.

The e-book includes practical tips and guidance for school governors and senior team, education risk managers and systems integrators working in the sector, and it is entitled – Implementing video solutions to transform education settings.

Serious security incidents, including attacks against students and staff, are thankfully rare, but by law the risks must be taken seriously. The Idis e-book outlines some of the key regulatory requirements in educational settings and highlights factors that can contribute to the successful use of video.

The guide examines issues of cost and affordability and explores strategies for putting in place the most appro-

priate protection, covering perimeters, grounds, entrances, corridors, and learning areas. As well as up-front (CAPEX) costs, buyers should make sure they understand ongoing (OPEX) costs in all price comparisons they make. Unfair VMS and analytics pricing models are still common, with users being charged annual licence and device connection fees, hidden charges for functions they never use, or high additional charges to connect extra cameras. The e-book includes advice on how to avoid this.

A key benefit of properly designed video solutions is that they give school staff, including receptionists and senior management, a clear overview of activity on site, allowing faster interventions.

As well as detecting and reviewing external threats, video is also being used to help teaching staff identify problem behaviours and intervene more effectively in negative behaviour cycles, allowing them to resolve

conflicts sooner and giving them confidence that they are making fair judgements. The ability to retrieve HD video footage of events in schools, for example, has been proven to be an effective deterrent against both anti-social behaviour and false claims of bullying. By providing an accurate record of events video can reduce the need for police interventions, but greatly assist those interventions when they really are necessary.

"From system ease-of-use to performance, durability, and value, there are many issues for buyers to take into account when they invest in new or upgraded video technology," says James Min, Managing Director, Idis Europe. "Based on Idis's extensive experience working in education settings this e-book breaks down those issues and explains them very clearly. We believe this will give senior managers and their contractors the most helpful starting point."



Partnering with **Kawach**  
will always be a **BRIGHT** idea



SECURITY SOLUTIONS FOR HOMES & BUSINESSES

Established in 1983, Kawach has been the most trusted source of highly efficient and dependable electronic protection solutions for thousands of end users across India. As a Master Distributor of Jablotron, the world's leading European manufacturer of high quality intruder alarm systems, Kawach has access to the latest technological innovations. We provide a full range of wired and wireless alarms with GSM/LAN communicators, central monitoring stations, comprehensive training and support to our business partners.

JABLOTRON  
CREATING ALARMS



JA-100. The addressable 4 wire alarm system range

Complete solutions for Intrusion Detection & Alarm Systems

When it comes to making a choice of technologies and devices to protect life and assets, we uncompromisingly leverage our 33 years of hands-on experience to suggest the best technology, field proven devices that fit within the assigned budget. Our arsenal comprises of military grade systems to simple home and personal security systems.

Call today to schedule  
a training, see a live demo or  
to place an order...

"Security House"  
24-B Udyog Vihar - V, Gurgaon-122016, India  
Tel: +91 - 124 - 4001111 | E-mail: info@kawach.com  
Web: www.kawach.com

INDUSTRY  
EVENTS



**UK**  
05-07 April 2022  
The Security  
Event  
N.E.C. Birmingham  
U.K.  
<https://www.thesecurityevent.co.uk/>



**RUSSIA**  
12-15 April 2022  
Securika Moscow 2022  
Crocus Expo International  
Exhibition Centre Moscow  
Russia  
<https://securika-moscow.ru/Home?culture=en-GB>



**CANADA**  
20 April 2022  
Security Canada East  
Sheraton Laval, Laval,  
Quebec  
Canada  
<http://securitycanadaexpo.com/>



**KOREA**  
20-22 April 2022  
Secon 2022  
Korea International Exhibition  
Centre - Kintex Seoul  
Korea  
<http://www.seconexpo.com/2020/eng/main.asp>



**NIGERIA**  
10-12 May 2022  
Securex West Africa 2022  
Lagos,  
Nigeria  
<https://www.securexwestafrica.com>



**UK**  
17-19 May 2022  
International Firex  
ExCeL London,  
London  
United Kingdom  
<http://www.firex.co.uk/>



**INDIA**  
19 May 2022  
Top Indian Women Influencers  
In Security 2021  
Hotel Fortune Select Global,  
Gurugram, India  
<https://twiis.securitytoday.in>



**INDIA**  
19-21 May 2022  
Secutech India  
Bombay Exhibition Center,  
Mumbai  
India  
<https://secutechindia.tw.messefrankfurt.com/mumbai/en.html>



**CZECH REPUBLIC**  
22-24 May 2022  
ASIS Europe 2022  
Prague Congress Centre,  
Nusle Prague  
Czech Republic  
<http://www.asiseurope.org>



**USA**  
14-17 June 2022  
ESX Electronic Security Expo  
Music City Centre  
Nashville, TN  
USA  
<https://www.esxweb.com/>



**INDIA**  
17-18 June 2022  
Security & Fire Expo-South India  
Chennai Trade Center  
Tamil Nadu  
India  
<http://www.safeindiaexpo.com/>



**GERMANY**  
20-25 June 2022  
Interschutz 2022  
Hannover Exhibition Grounds.  
Germany  
<https://www.interschutz.de/en/news/news-articles/new-date-for-interschutz-june-2022-11712>



**UK**  
21-23 June 2022  
Infosecurity Europe  
Excel  
London  
United Kingdom  
<http://www.infosec.co.uk/>



**INDIA**  
06-07 July 2022  
International Police Expo 2022  
New Pragati Maidan  
Delhi  
India  
[www.internationalpoliceexpo.com/](http://www.internationalpoliceexpo.com/)



**USA**  
24-26 August 2022  
IAFC Fire-Rescue International  
Phoenix Arizona  
USA  
<http://www.iafc.org/fri>



**SAUDI ARABIA**  
13-15 September 2022  
Intersec Saudi Arabia  
Riyadh Exhibition Center  
Riyadh,  
Saudi Arabia  
<https://intersec-ksa.ae.messefrankfurt.com/ksa/en.html>



**GERMANY**  
20-23 September 2022  
Security Essen 2022  
Messe Essen, Norbertstrasse  
2, Essen,  
Germany  
[https://www.security-essen.de/impetus\\_provider/](https://www.security-essen.de/impetus_provider/)



**UK**  
13 October 2022  
Consec 2022  
Twickenham Stadium  
Twickenham  
United Kingdom  
[https://www.security-essen.de/impetus\\_provider/](https://www.security-essen.de/impetus_provider/)



**TURKEY**  
13-16 October 2022  
ISAF Security Exhibition 26th  
International Security Exhibition  
Istanbul Expo Centre  
Istanbul Turkey  
<https://www.marmarafuar.com.tr/en/exhibition-programme/>



**SINGAPORE**  
16-18 November 2022  
Fire & Disaster Asia 2022  
Marina Bay Sands, Singapore  
Singapore  
<http://www.firedisasterasia.com.sg>

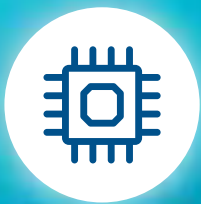


**USA**  
16-17 November 2022  
ASIS 30th Security Conference  
and Expo  
Javits Centre, New York,  
USA  
<https://asisnyc.org/events/conference-expo/>



Improve Your Notebook Performance

DDR4 Memory - S1



Better Compatibility,  
Compatible with More  
Products After  
Hikvision Optimization



Faster Data  
Transfer & Enhanced  
Power Efficiency



Reduced Power  
Consumption



Increased Memory  
Bandwidth



Speed 2666 MHz



Capacity 4GB, 8GB & 16GB



Corporate Office:  
PRAMA HIKVISION INDIA PVT. LTD.  
Oberoi Commerz 2, International Business Park,  
18th Floor, Near Oberoi Mall, Off W.E. Highway,  
Goregaon (East), Mumbai - 400 063.  
Tel: +91-22-4041 9900, 2846 9900  
Web: [www.hikvisionindia.com](http://www.hikvisionindia.com)



Sales:  
+91-22-4041 9944, 2846 9944  
[sales@pramahikvision.com](mailto:sales@pramahikvision.com)



RMA Support:  
+91-22-6822 9977, 3322 6070, 2846 9977, 0250 663 6677  
[rma@pramahikvision.com](mailto:rma@pramahikvision.com)



Technical Support:  
+91-22-6822 9999, 3322 6060, 2846 9999  
[support@pramahikvision.com](mailto:support@pramahikvision.com)  
Toll Free: 1800 222 699